

# INSTALLATION INSTRUCTIONS

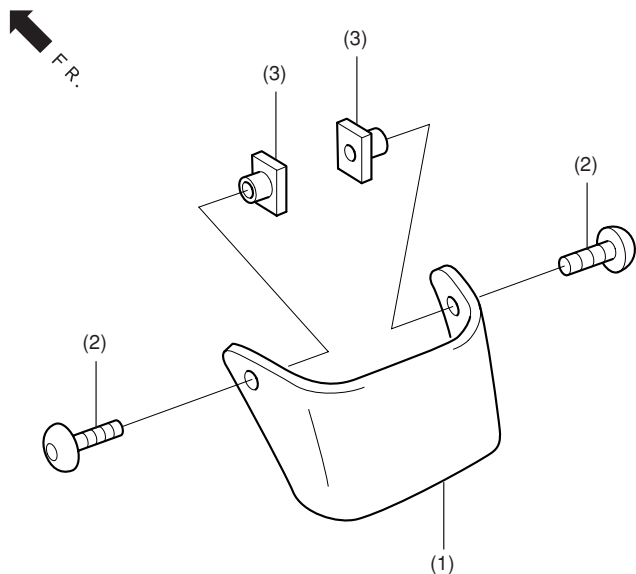
Accessory  
**CHROME FRONT FENDER EXTENSION**  
 P/N 08P08-MCA-100

Application  
**GL1800**

Publications No.  
 Issue Date  
**January 2001**

**Honda Dealer: Please give a copy of this instruction to your customer.**

## PARTS LIST



No.	Description	Q'ty
(1)	Front fender extension	1
(2)	6 mm Special bolt	2
(3)	6 mm Special nut	2

## TOOLS AND SUPPLIES REQUIRED

- Hex wrench (5 mm)
- Electric drill motor
- Drill bit (10 mm)
- Wooden block
- Marker
- Tape
- Isopropyl alcohol
- Shop towel
- Torque wrench

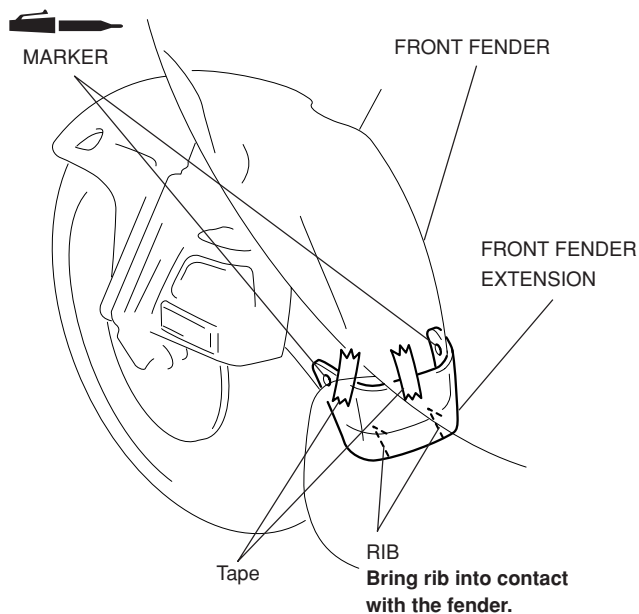
## TORQUE CHART

Be sure to tighten all bolts to their specified torque.

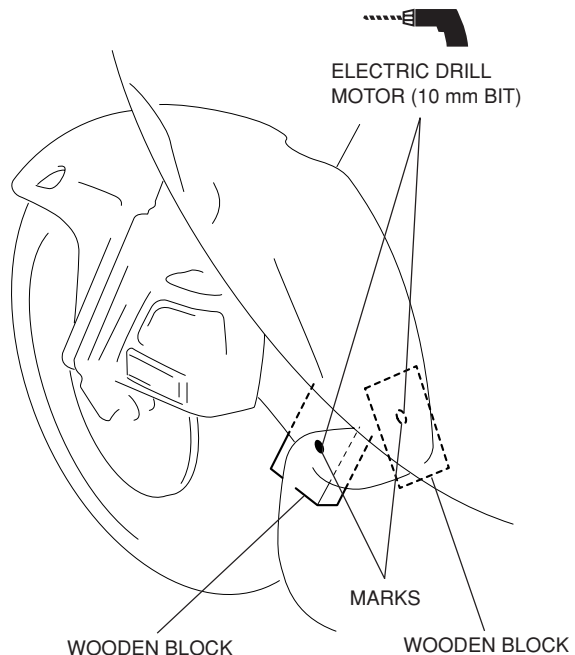
Item	N·m	kgf·m	lbf·ft
6mm Special bolt	10	1.0	7

## INSTALLATION

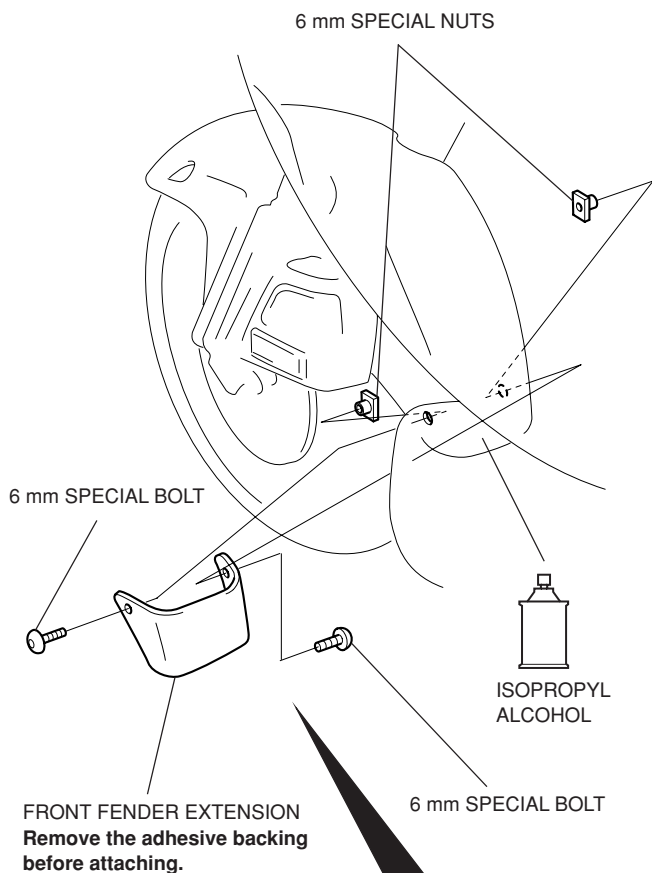
- Position the front fender extension on the front fender and mark the two holes for the front fender extension. Remove the front fender extension.



- Place an wooden block under the front fender and drill a hole through each mark with an electric drill motor and 10 mm drill bit.



3. Using an isopropyl alcohol, thoroughly clean the area where the front fender extension will be attached. Position the extension on the front fender and secure with the 6 mm special bolts and special nuts.



**Install the 6 mm special nuts so that they do not extend passed the front fender as shown.**

