

INSTALLATION INSTRUCTIONS

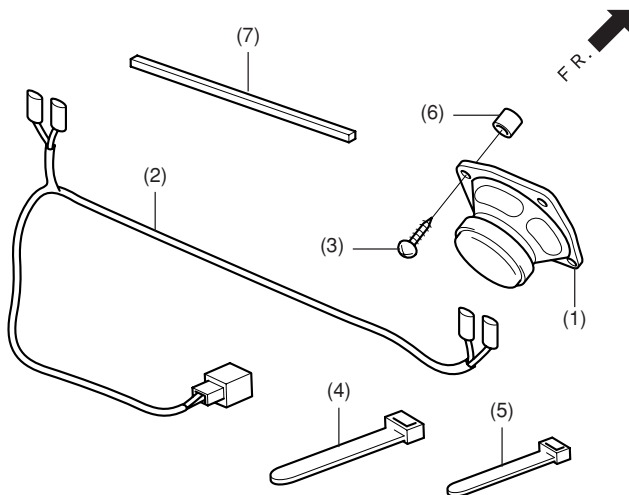
Accessory
REAR SPEAKER KIT
 P/N 08A10-MCA-100

Application
GL1800

Publications No.
 Issue Date
December 2000

Honda Dealer: Please give a copy of this instruction to your customer.

PARTS LIST



No.	Description	Q'ty
(1)	Speaker unit	2
(2)	Speaker harness	1
(3)	5 mm Screw	8
(4)	Wire tie (large)	2
(5)	Wire tie (small)	4
(6)	Collar	8
(7)	Speaker seal	1

TOOLS REQUIRED

Phillips ® screwdriver
 Electric drill motor
 Drill bit (10,13 mm)
 Scissors
 Torque wrench

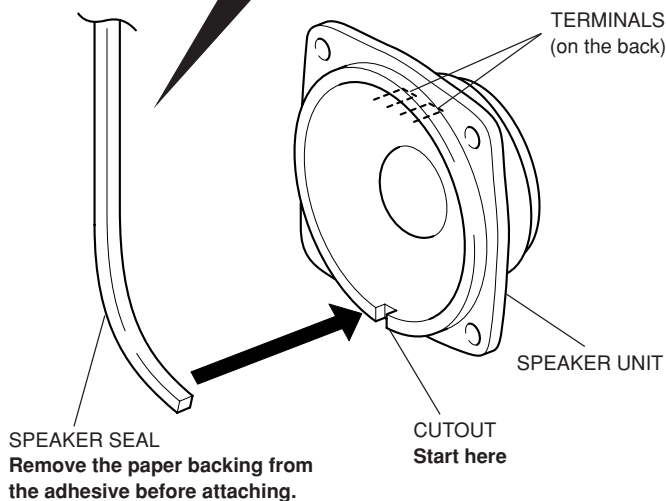
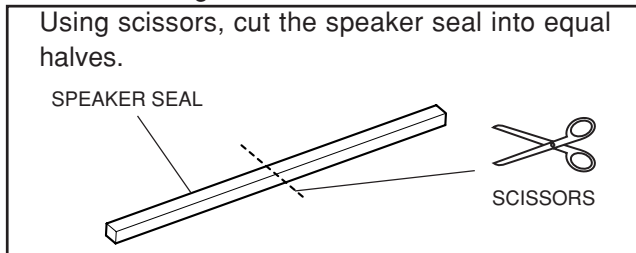
TORQUE CHART

Be sure to tighten all screws to their specified torque.

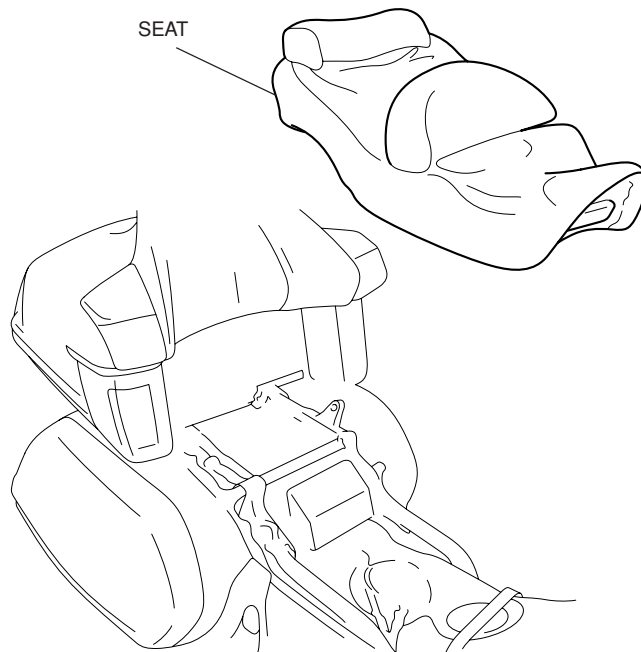
Item	N·m	kgf·m	lbf·ft
5mm Screw	4	0.4	2.9

INSTALLATION

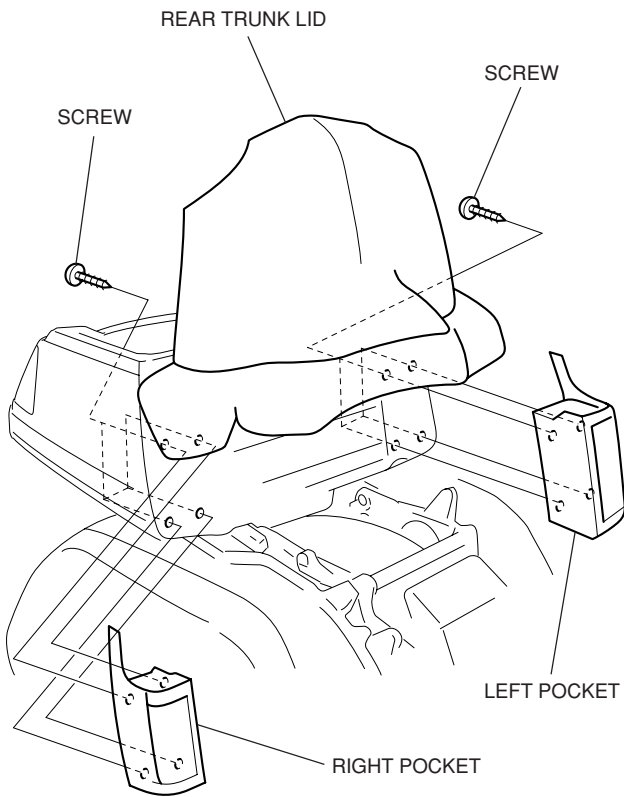
1. Apply the speaker seal to the speaker unit starting at a point opposite the terminal. Use care not of cover the mounting cutout.



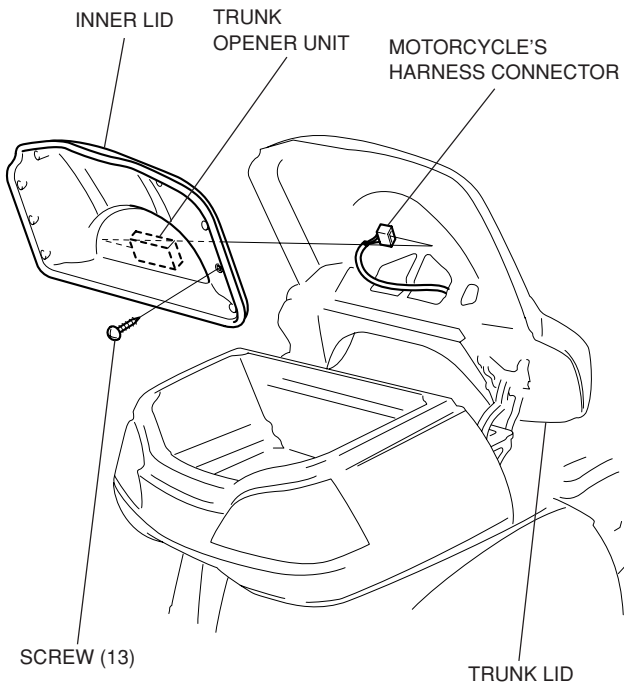
2. Remove the seat as described in the Service Manual.



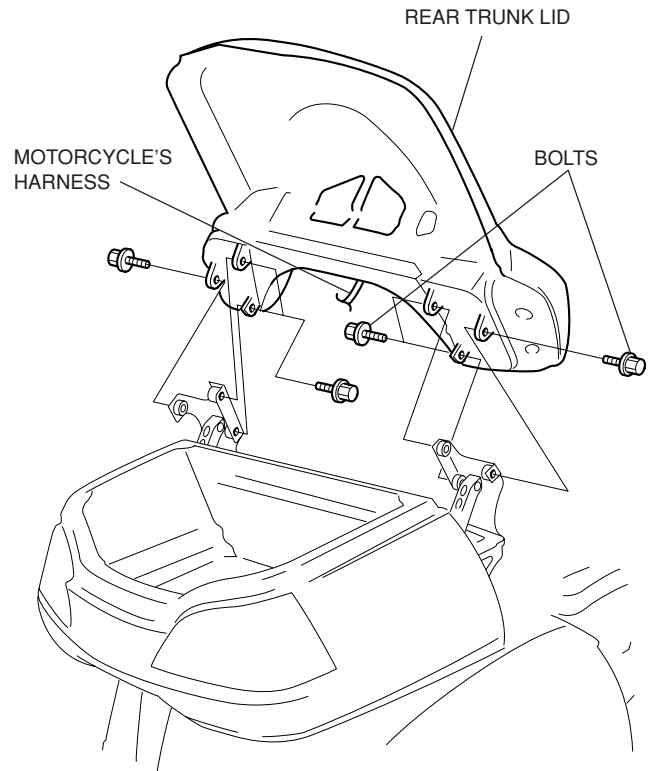
3. Disconnect the negative cable from the battery.
4. Remove the screws and the right and left pockets.



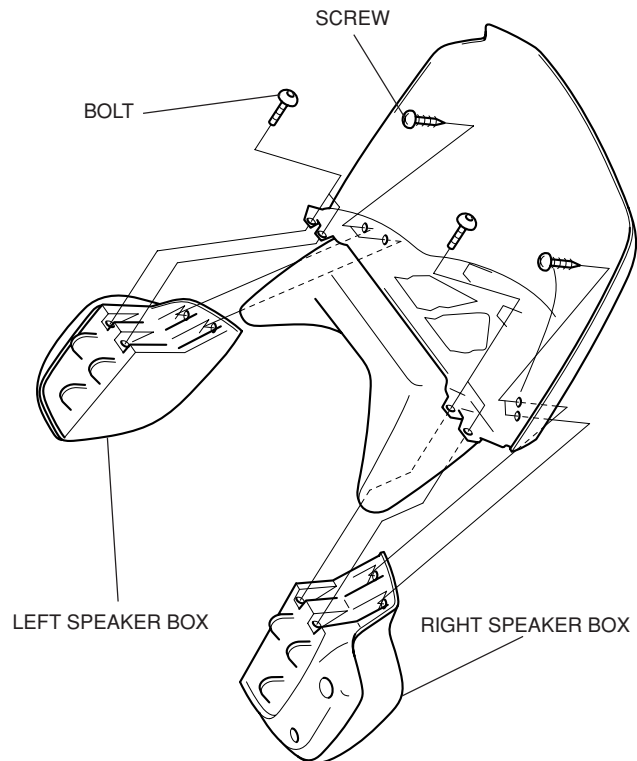
5. Remove the 13 screws and the inner lid from the trunk lid as described in the Service Manual.



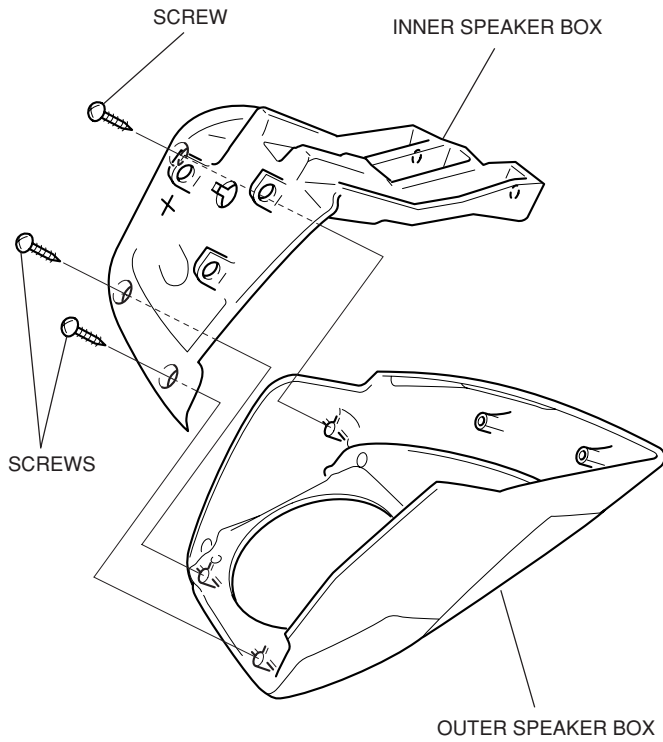
6. Remove the bolts and the trunk lid as described in the Service Manual.



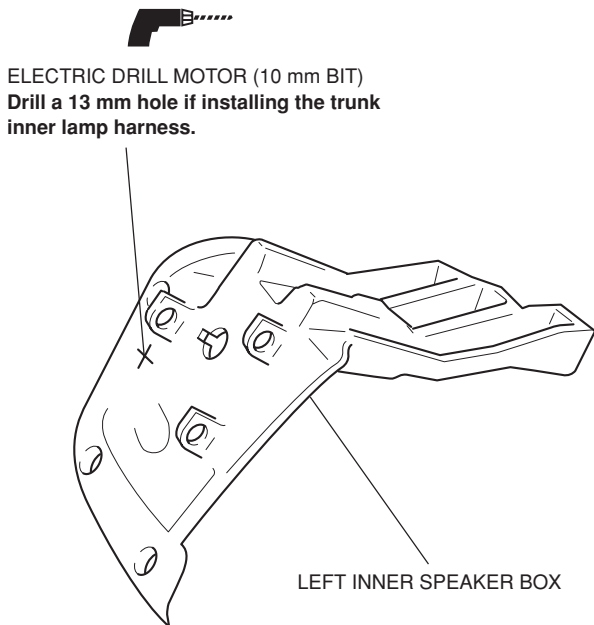
7. Remove the bolts, screws and the right and left speaker boxes from the trunk lid.



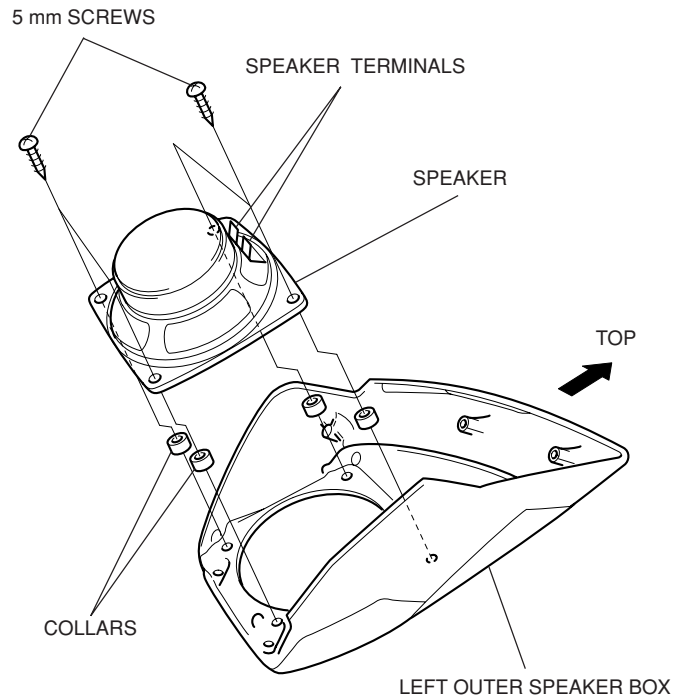
8. Separate the inner and outer speaker boxes.



9. Locate a mark on the left speaker box and drill a hole through the mark using an electric drill motor starting with a 3 mm, 6 mm and finally with a 10 mm drill bit. Remove any burrs from the edge of the hole.

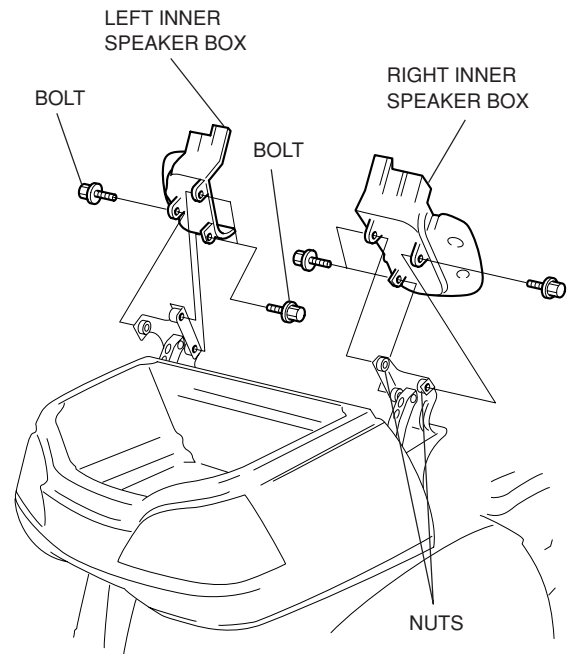


10. Install the speaker unit on the left outer speaker box.

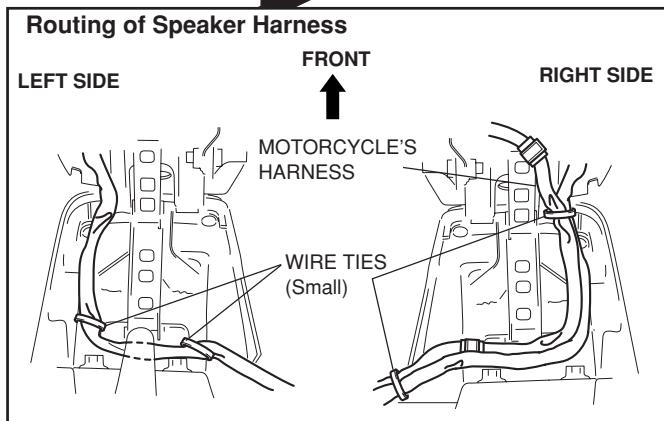
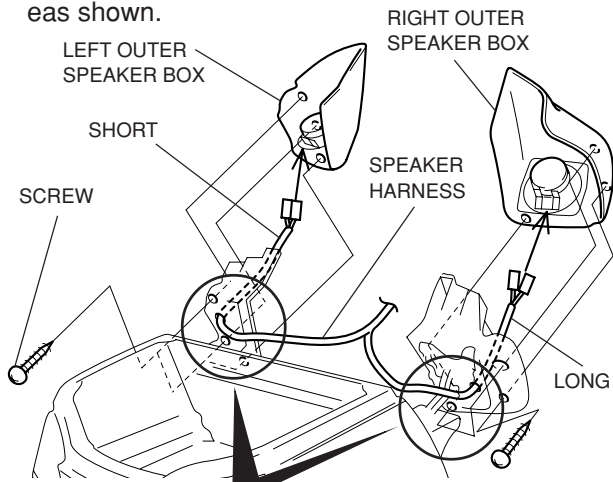


11. Repeat on the right side.

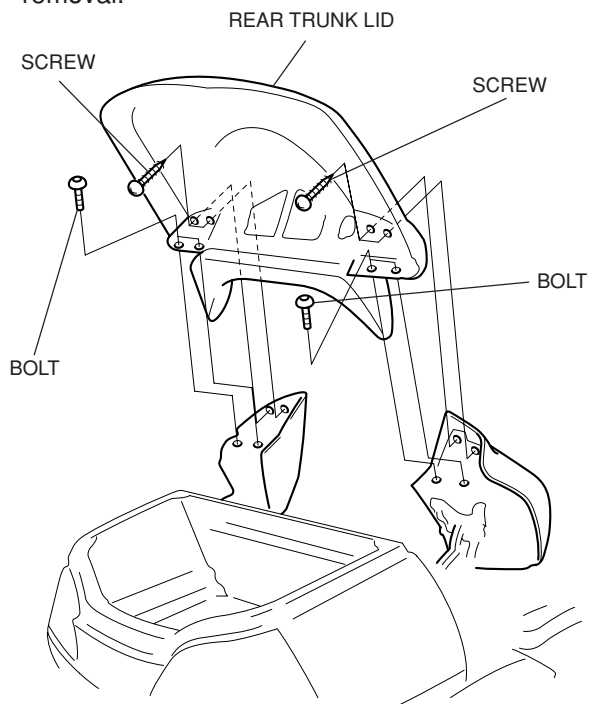
12. Install the left inner speaker box on the motorcycle.



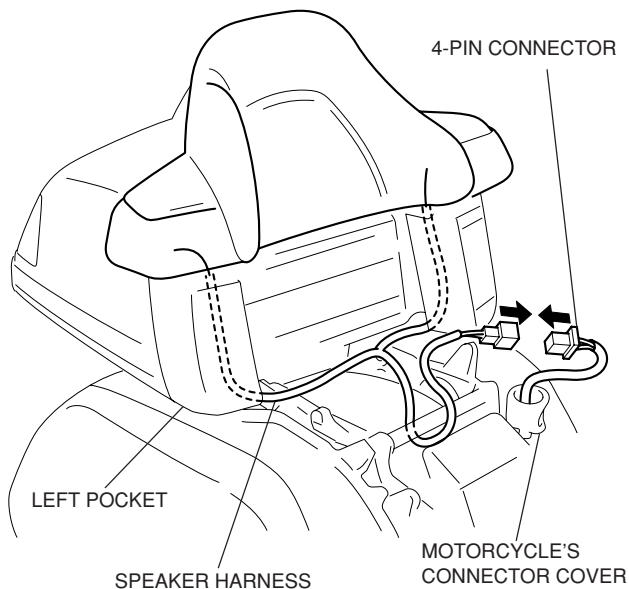
13. Connect the terminals of the speaker harness to the terminals on the speakers and install the outer speaker boxes over the inner speaker boxes. Secure the speaker harness with the wire ties in the areas shown.



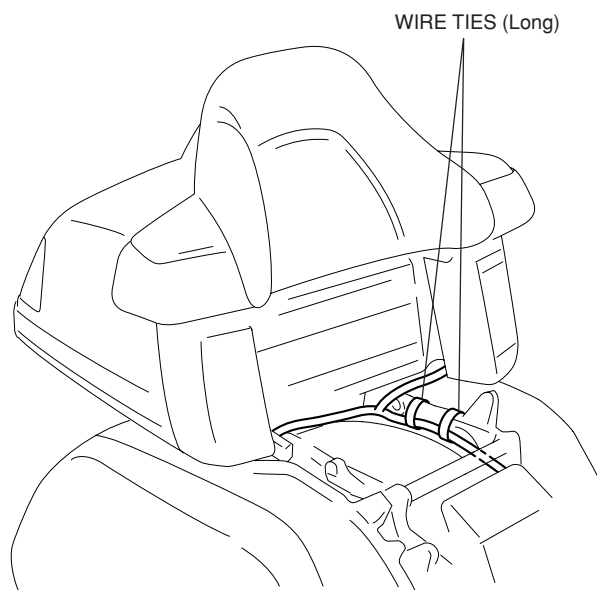
14. Install the rear trunk lid.
15. Reinstall the trunk inner lid in the reverse order of removal.



16. Reinstall the right and left pockets in the reverse order of removal. Route the speaker harness as shown and connect its 4-pin connector to the 4-pin connector of the motorcycle's harness.



17. Secure the harness with the two wire ties in the areas shown.



18. Connect the negative cable to the battery.
19. Reinstall the seat in the reverse order of removal.