



INSTALLATION INSTRUCTIONS

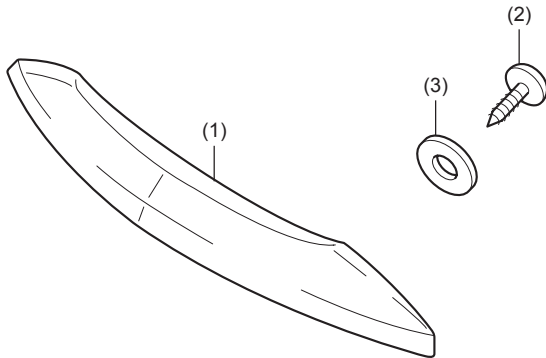
Accessory
CHROME TRUNK HANDLE
P/N 08U94-MCA-100

Application
GL1800

Publications No.
MII 11185
Issue Date
July 2005

Honda Dealer: Please give a copy of these instructions to your customer.

PARTS LIST



No.	Description	Qty
(1)	Trunk handle	1
(2)	5 mm screw	3
(3)	Washer	3

TOOLS AND SUPPLIES REQUIRED

Phillips ® screwdriver
 Electric drill motor
 Drill bit, 5mm (#9)
 Drill bit, 8 mm (5/16 in)
 Awl
 Scissors
 Tape
 Wood block
 Torque wrench

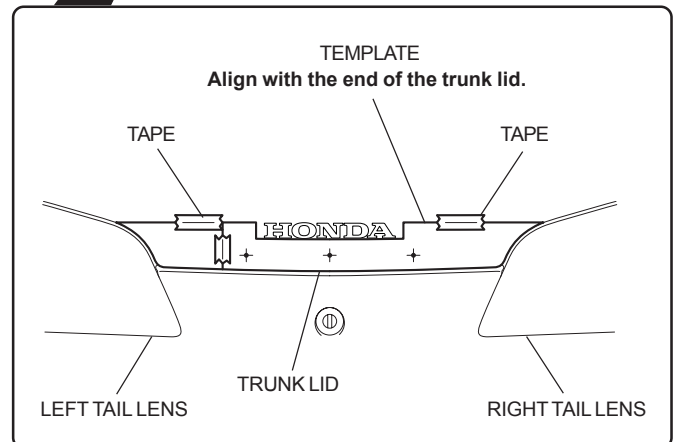
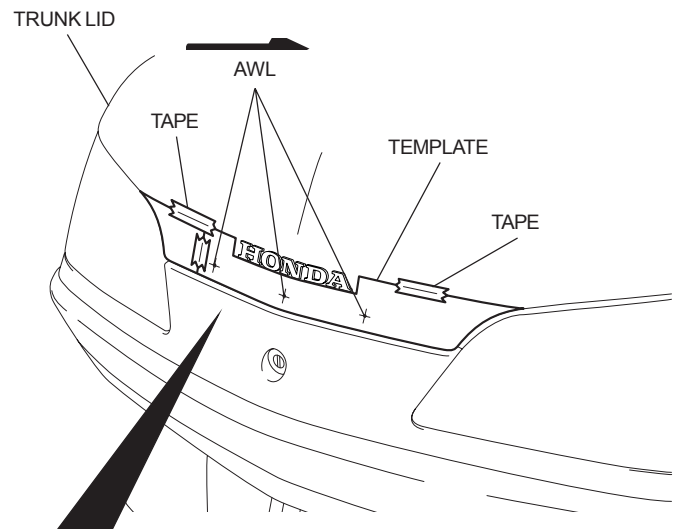
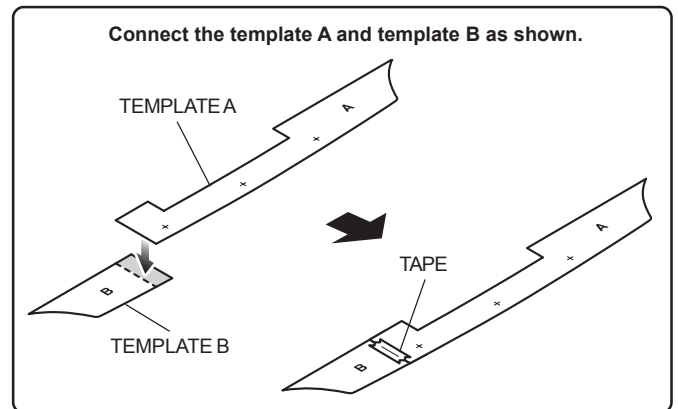
TORQUE CHART

Tighten all screws, bolts and nuts to their specified torques. Refer to the Service Manual for the tightening torques of removed parts.

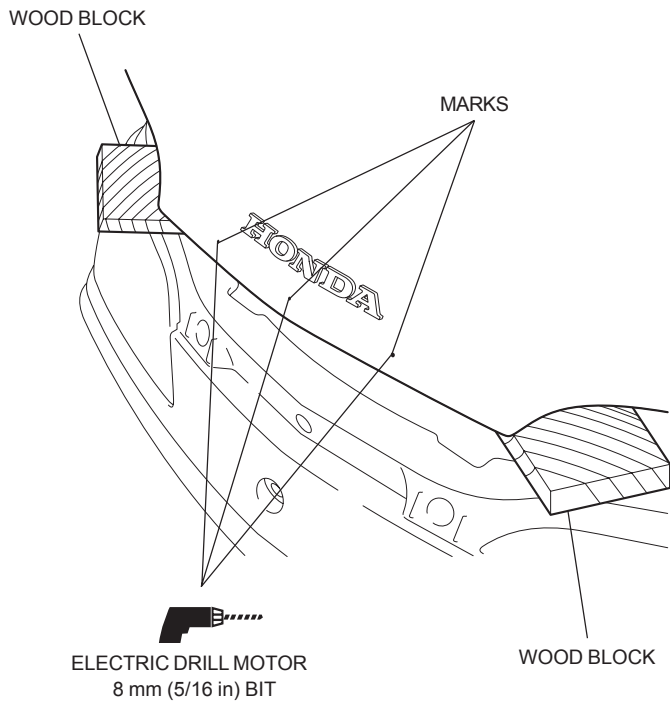
Item	N·m	kgf·m	lbf·ft
5 mm screw	4	0.4	2.9

INSTALLATION

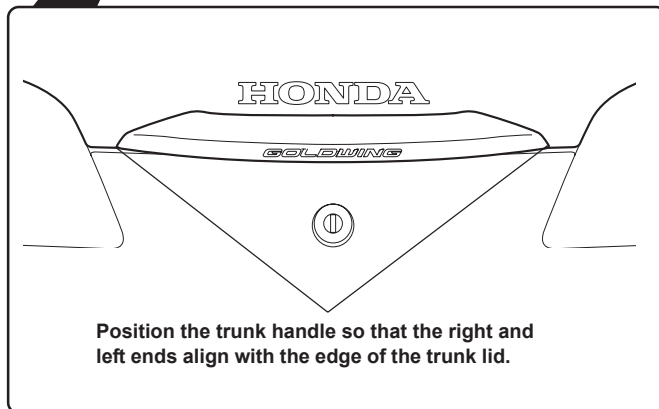
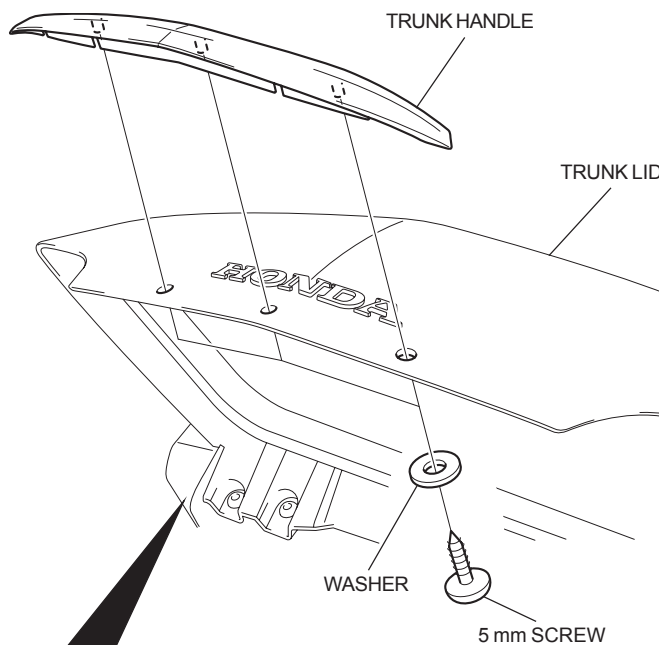
1. Cut out the template and attach it to the trunk lid in the position shown. Mark the trunk lid in the positions shown using an awl.



2. Remove the template. Drill through the marks you just made using an electric drill motor as shown.
- First drill with a 5 mm (#9) bit and finally with a 8 mm (5/16 in) bit.
 - Remove any burrs from the edge of the hole.



3. Open the trunk and install the trunk handle on the lid as shown.



TEMPLATE

Cut out the templates and use them to mark the drilling locations.

