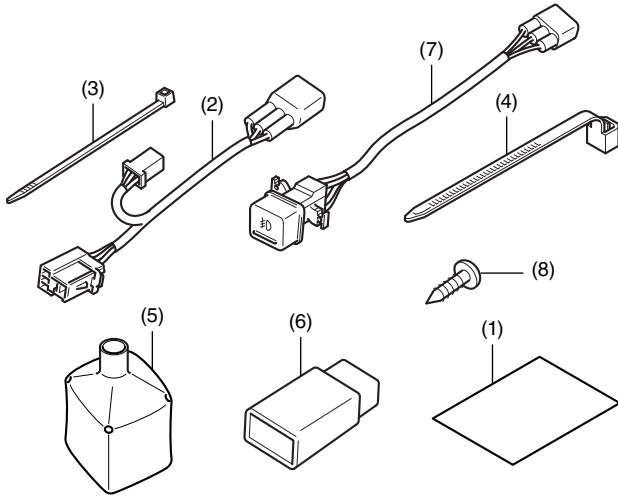
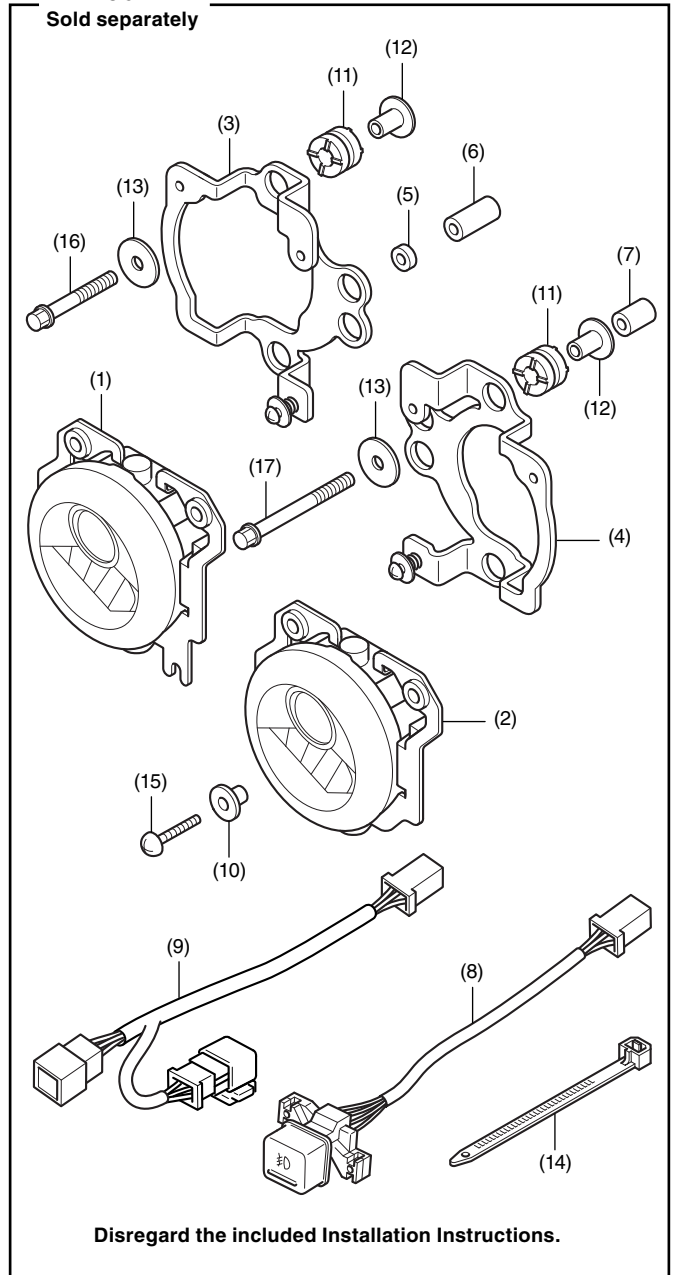


PARTS LIST



No.	Description	Qty
(1)	Installation Instruction URL	1
(2)	Fog lamp harness	1
(3)	Wire tie (narrow)	3
(4)	Wire tie (wide)	2
(5)	Connector cover	1
(6)	Power relay	1
(7)	Fog lamp switch	1
(8)	3 mm screw	2

LED FOG LAMP Sold separately



No.	Description	Qty
(1)	Right LED fog lamp	1
(2)	Left LED fog lamp	1
(3)	Right bracket	1
(4)	Left bracket	1
(5)	Collar (short)	1
(6)	Collar (long)	1
(7)	Collar (medium)	2
(8)	Switch (Not used.)	1
(9)	Fog lamp sub harness (Not used.)	4
(10)	Flange collar (small)	4
(11)	Grommet	6
(12)	Flange collar (large)	6
(13)	Washer	6
(14)	Wire tie	3
(15)	5 mm screw	4
(16)	6 mm SH flange bolt (short)	3
(17)	6 mm SH flange bolt (long)	3

TOOLS AND SUPPLIES REQUIRED

Socket (8 mm)

Ratchet

Phillips ® screwdriver

Side cutters

Ruler

Electrical tape

Scissors

File

Torque wrench

TORQUE CHART

Tighten all screws, bolts, and nuts to their specified torque values. Refer to the Service Manual for the torque values of the removed parts.

Item	N·m	kgf·m	lbf·ft
5 mm screw	4.2	0.4	3.1
6 mm SH flange bolt	10	1.0	7

INSTALLATION

▲ CAUTION

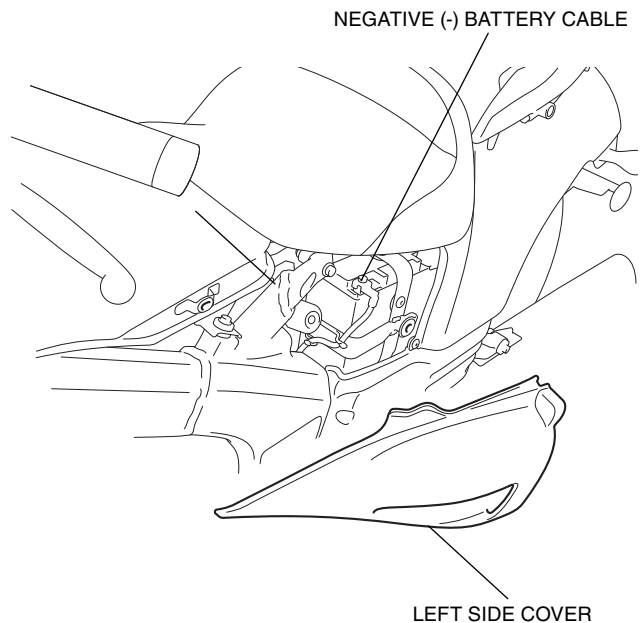
- To prevent burns, allow the engine, exhaust system, radiator, etc., to cool before installing the accessory.

NOTE:

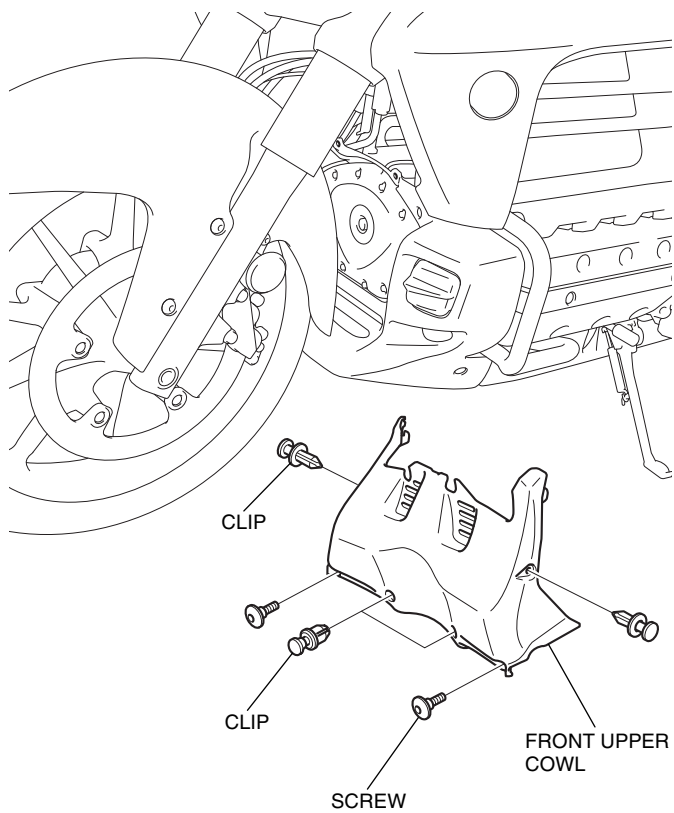
- The LED fog lamp is required for the installation of this accessory.
- Disconnect the negative (-) cable from the battery before installing this accessory.
- The memory of the clock will be erased when you disconnect the battery. Reset the clock after reconnecting the battery.
- Reinstall the removed parts on the motorcycle and make sure that the wires and harnesses are not pinched.
- Trim the excess ends off the wire ties after attaching them to the wire harnesses. Do not allow the cut part of the wire tie to interfere with another harness or brake hose.

- Remove the left side cover and disconnect the negative (-) cable from the battery.

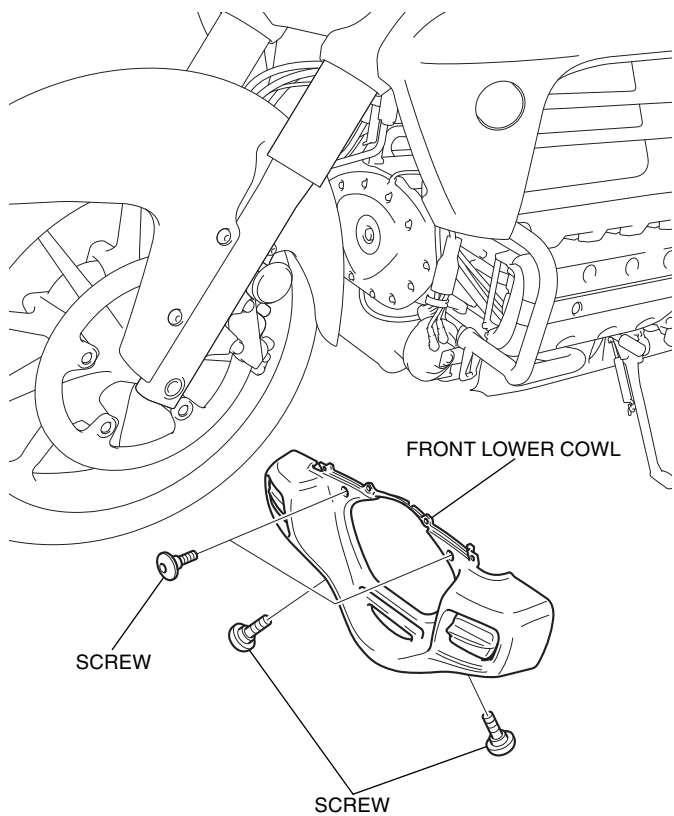
<Left side>



2. Remove the front upper cowl as shown.

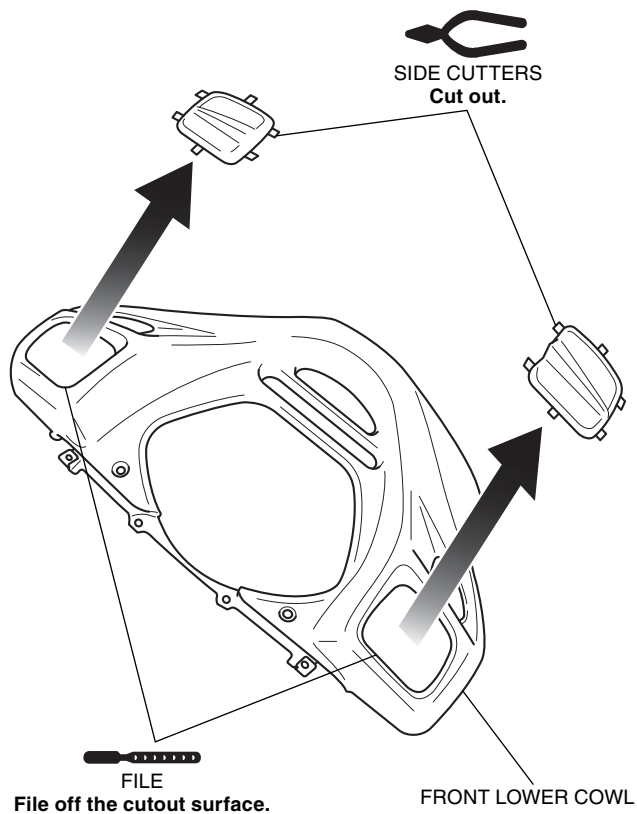


3. Remove the front lower cowl as shown.

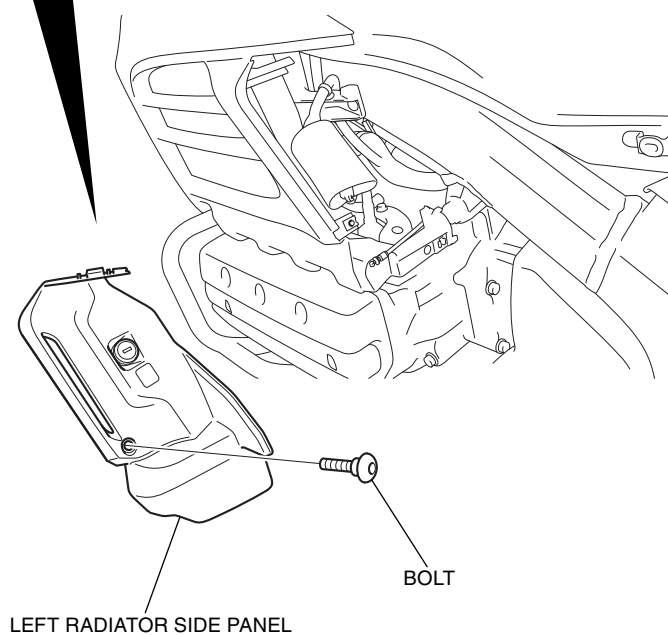
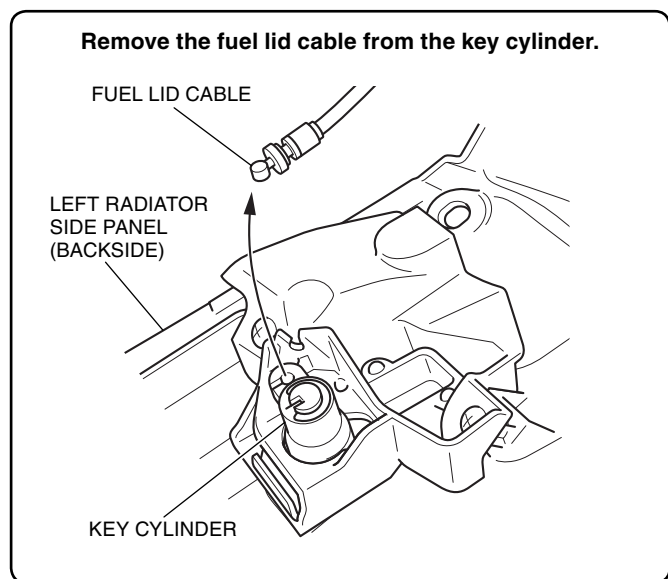


4. Cut out the front lower cowl as shown.

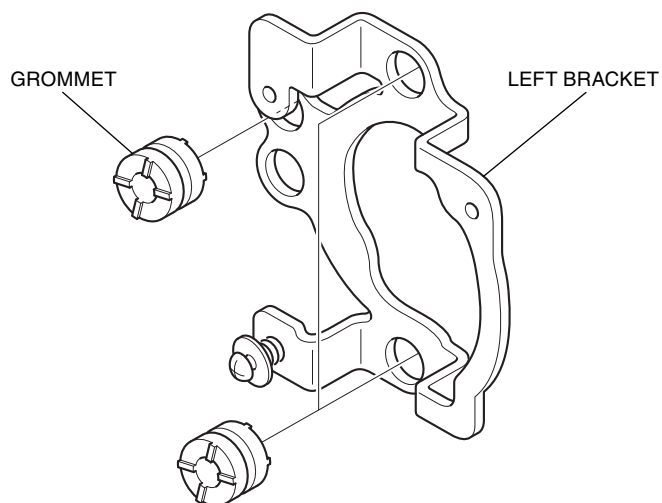
- Remove the any burrs from the edge of the hole.



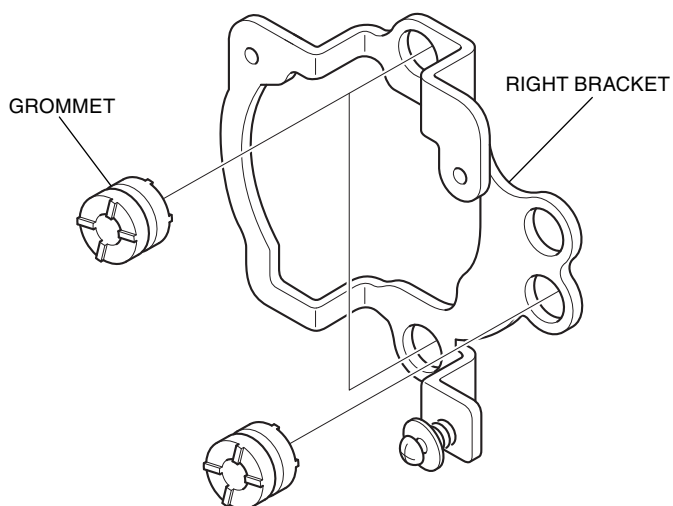
5. Remove the left radiator side panel as shown.
<Left side>



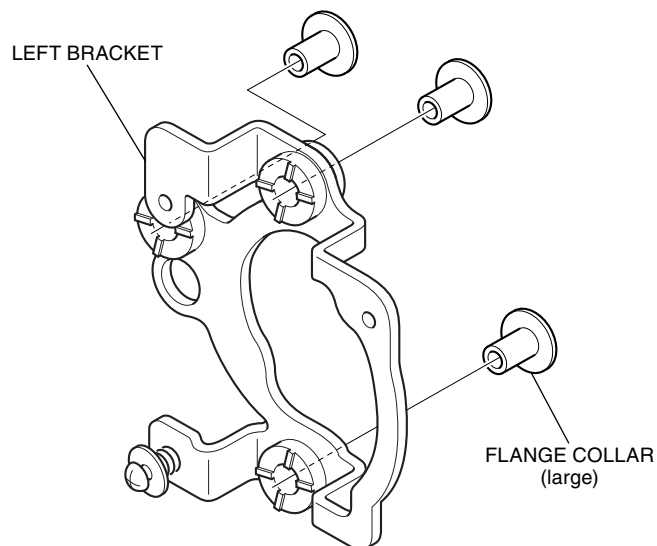
6. Install the three grommets in the holes of the left bracket as shown.



7. Install the three grommets in the holes of the right bracket as shown.

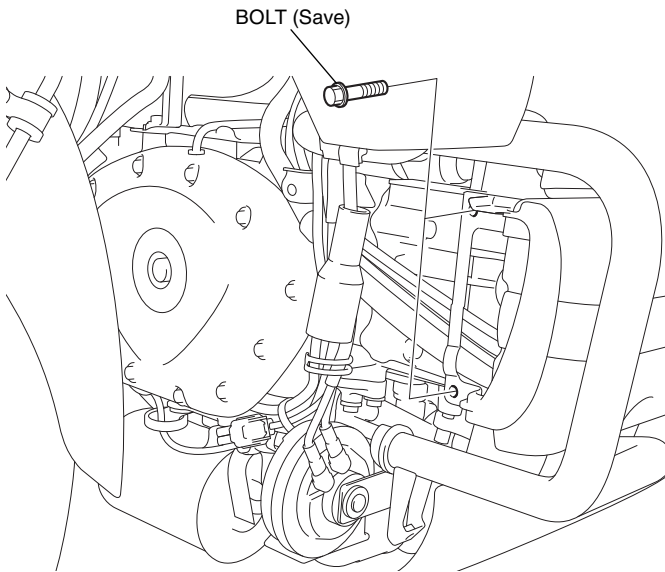


8. Install the flange collars to the left bracket as shown.
• Repeat on the right side.

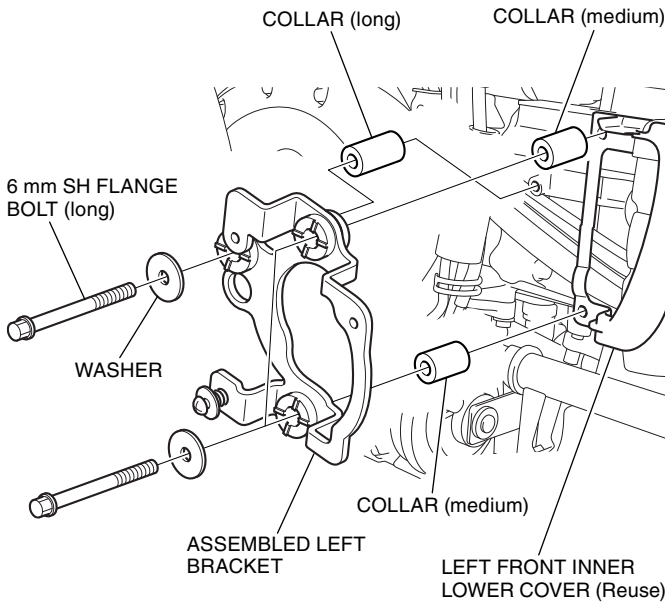


9. Remove the bolts as shown.

<Left side>

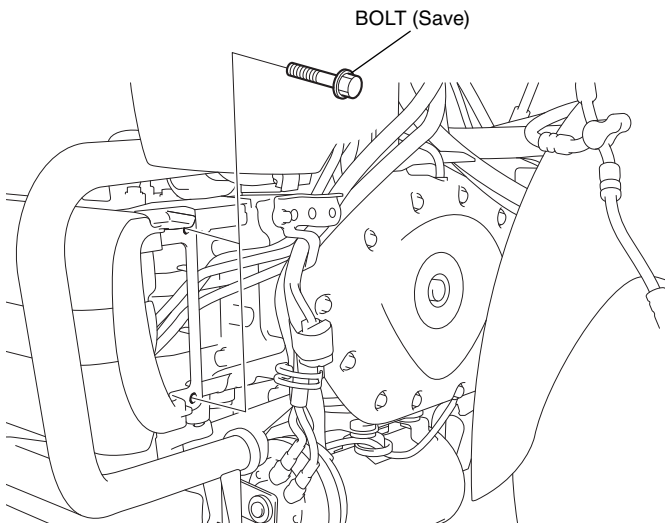


10. Install the left bracket as shown.

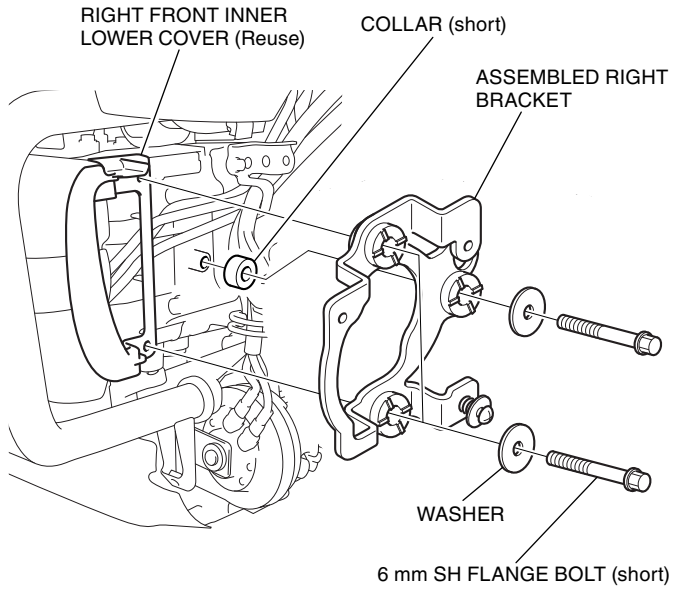


11. Remove the bolts as shown.

<Right side>

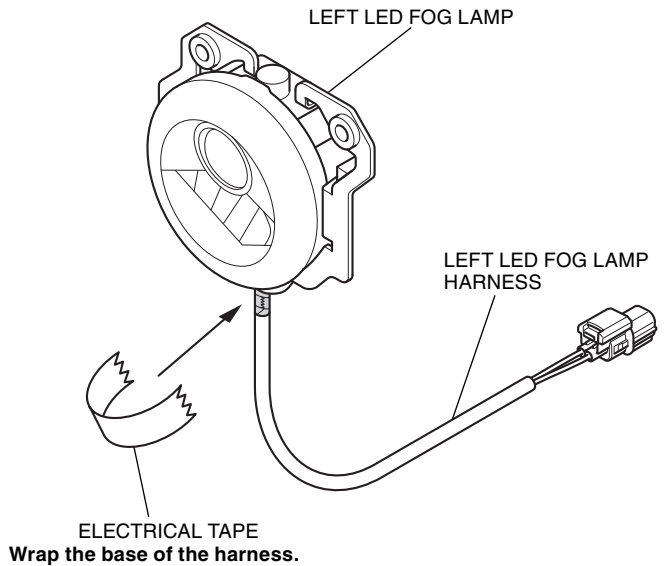


12. Install the right bracket as shown.

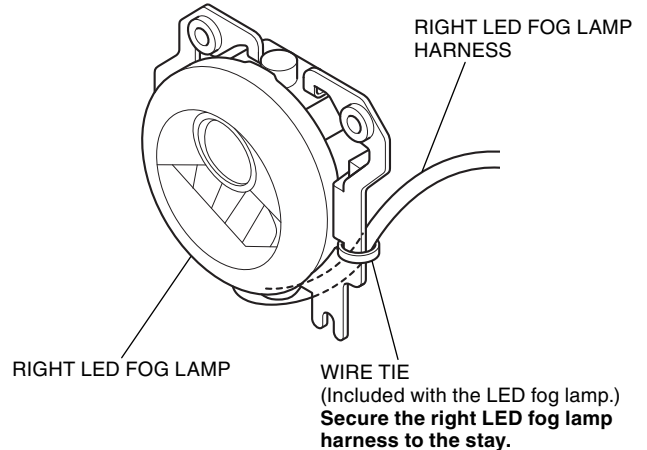


13. Wind the tape on to the left LED fog lamp harness as shown.

- Repeat on the right side.

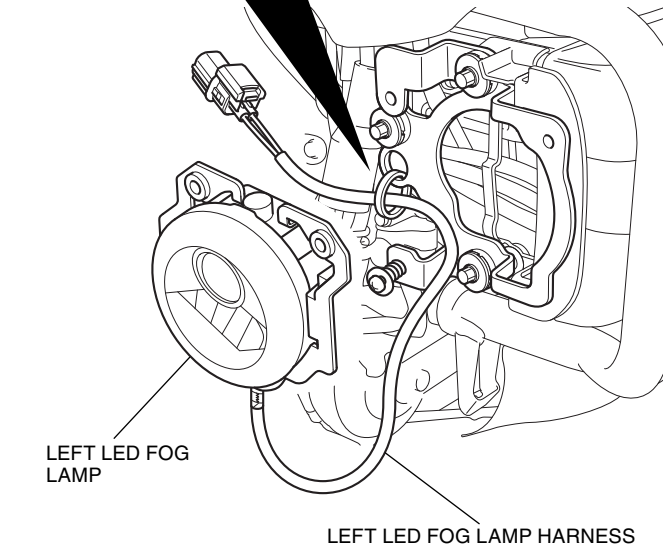
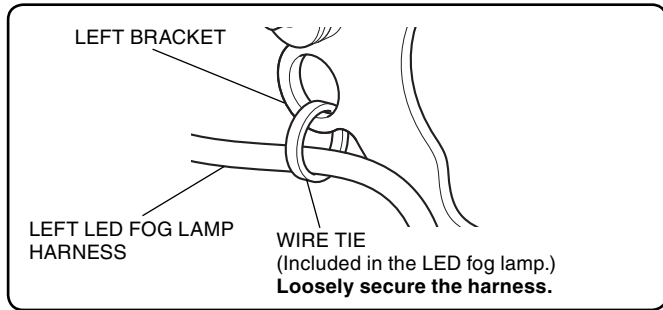


14. Secure the right LED fog lamp harness with the wire tie as shown.



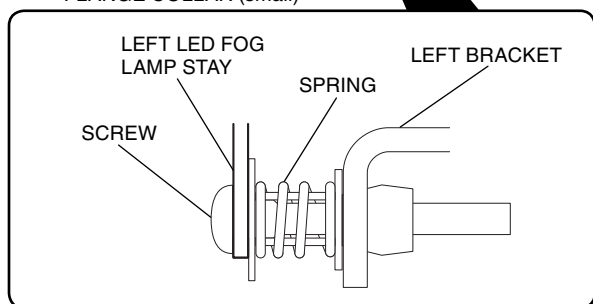
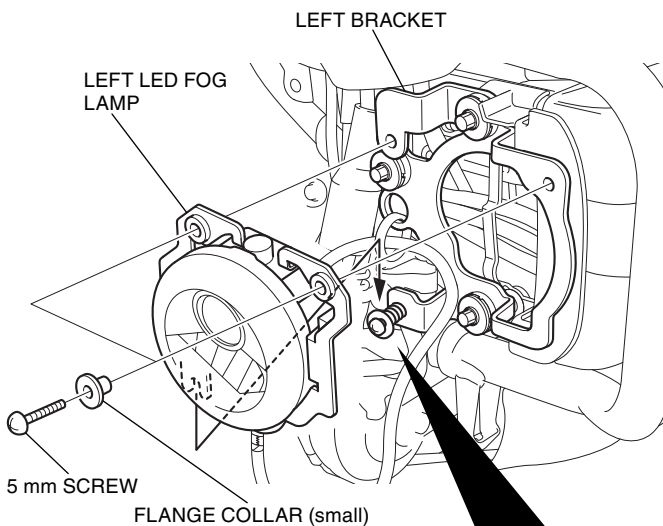
15. Secure the left LED fog lamp harness with the wire tie as shown.

<Left side>

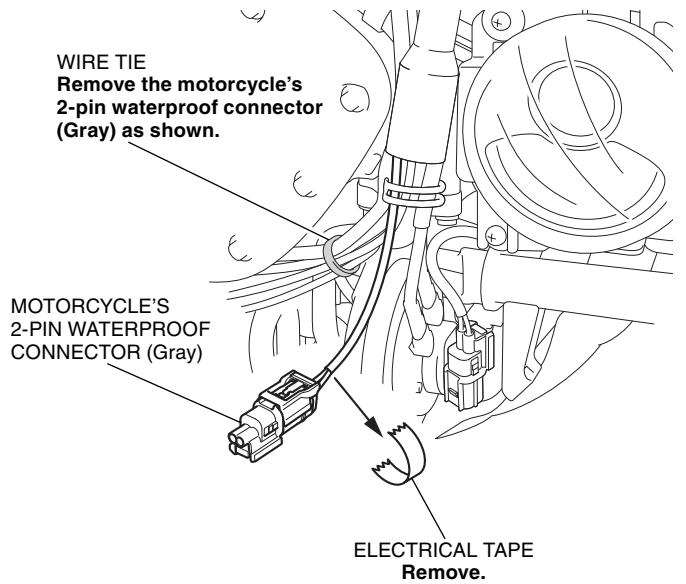


16. Install the left LED fog lamp as shown.

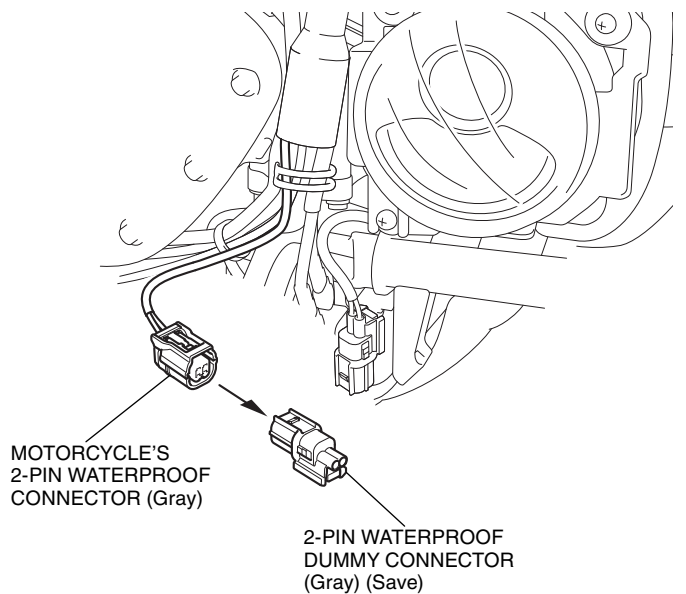
- Repeat on the right side.



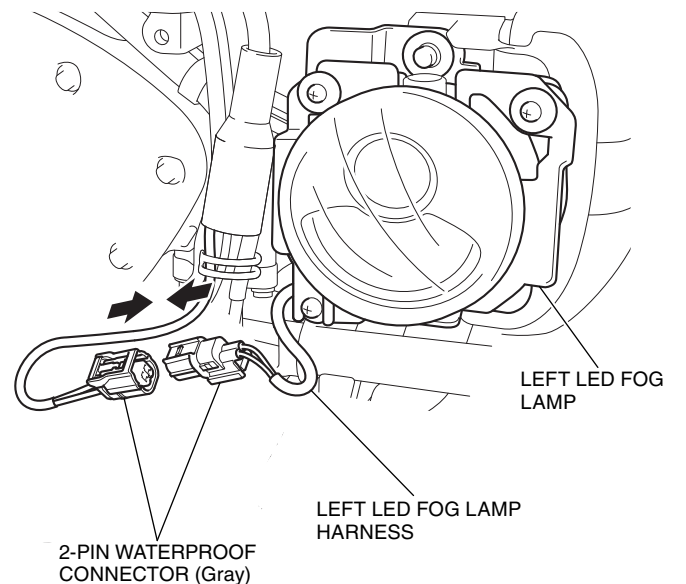
17. Remove the tape from the connector as shown.



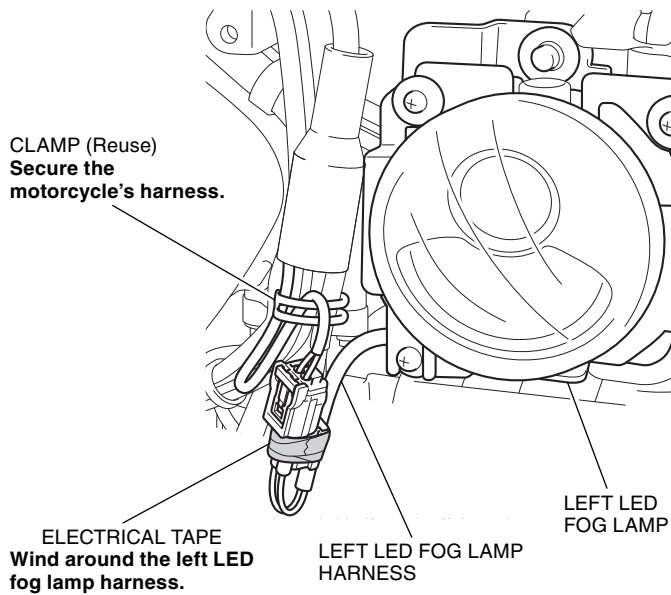
18. Remove the dummy connector as shown.



19. Connect the left LED fog lamp harness as shown.

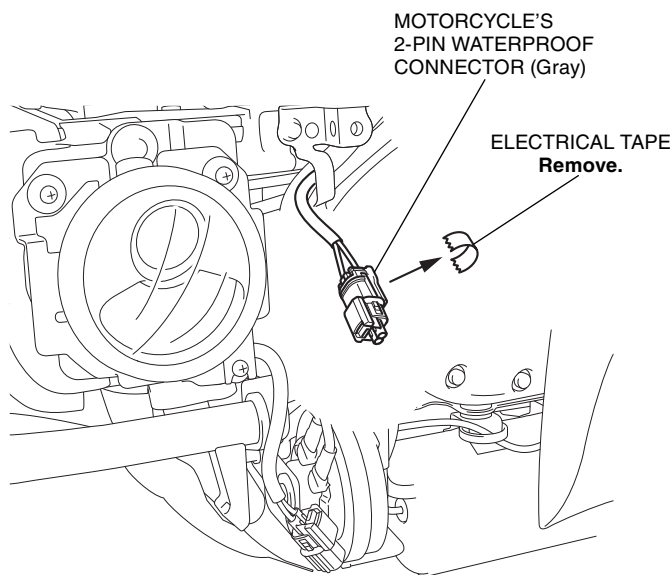


20. Secure the left LED fog lamp harness.

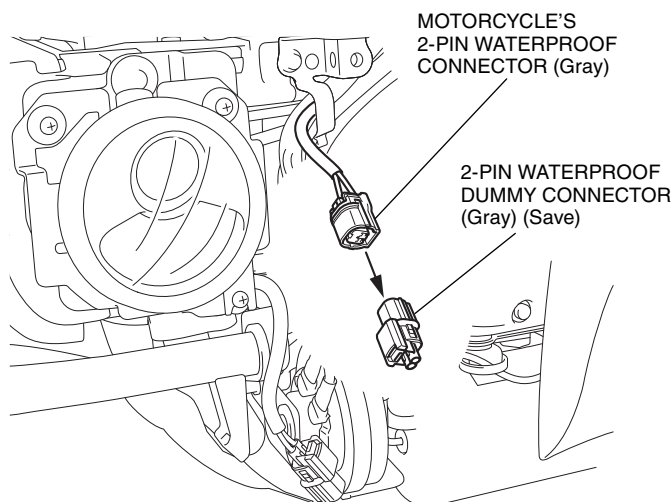


21. Remove the tape from the connector as shown.

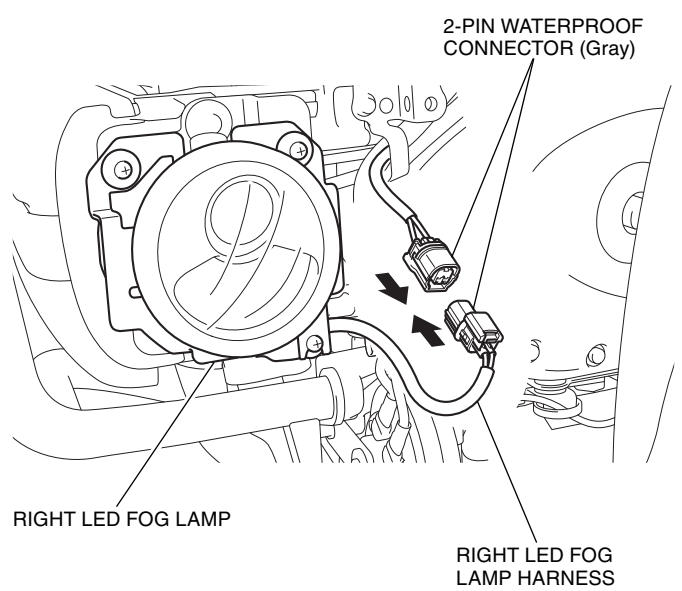
<Right side>



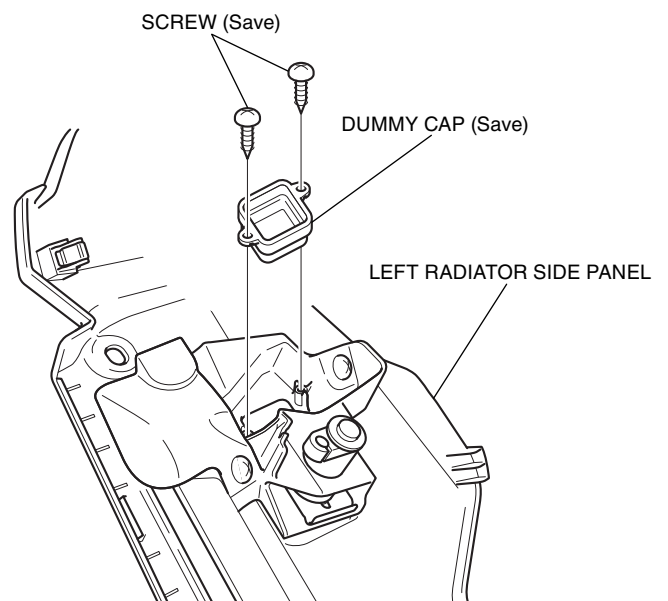
22. Remove the dummy connector as shown.



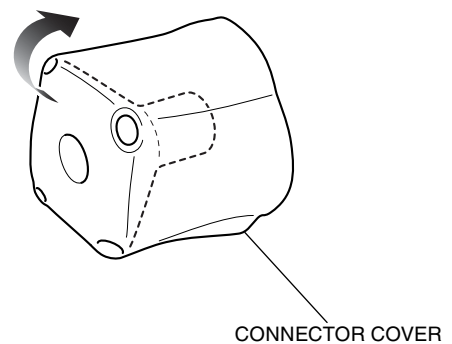
23. Connect the right LED fog lamp harness as shown.



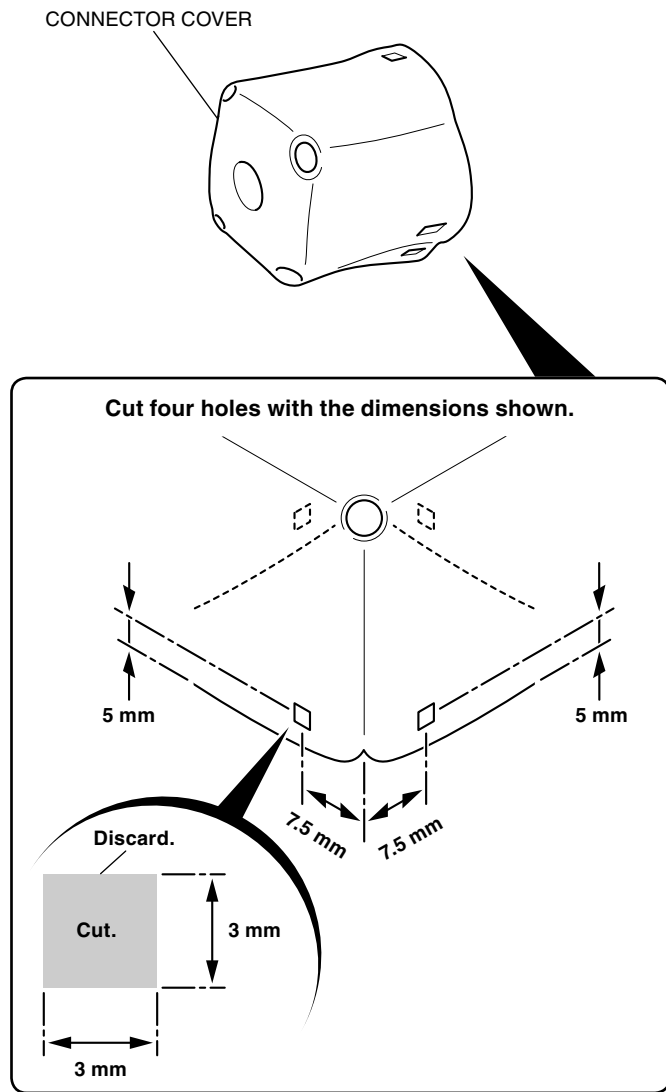
24. Remove the dummy cap as shown.



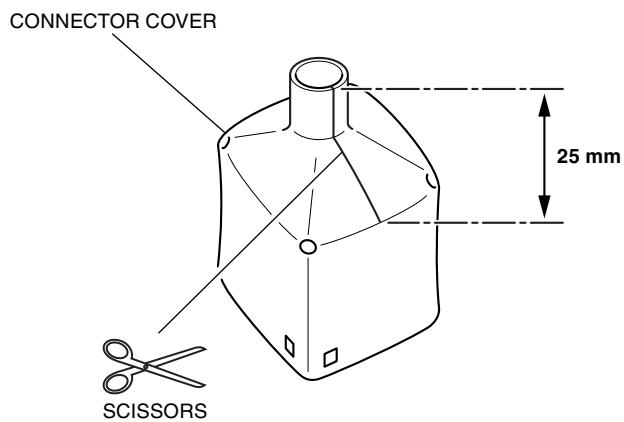
25. Turn over the connector cover as shown.



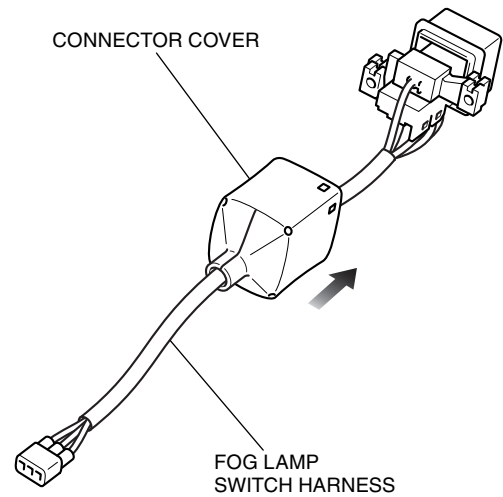
26. Cut the connector cover as shown.



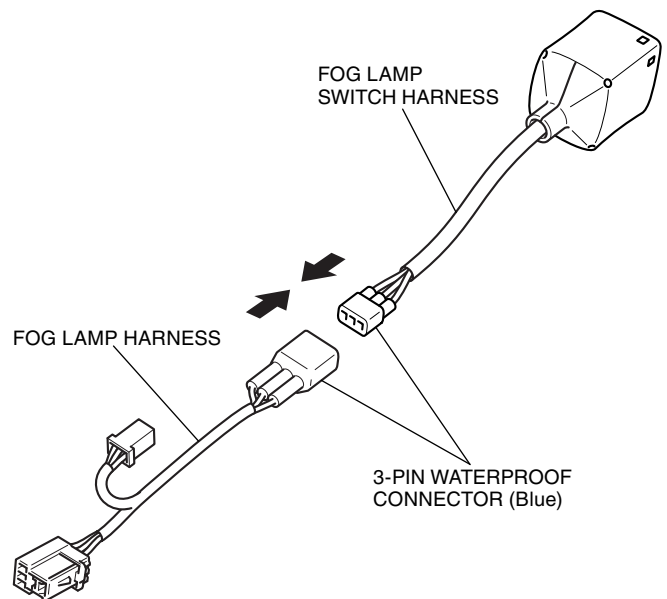
27. Return the connector cover and cut it as shown.



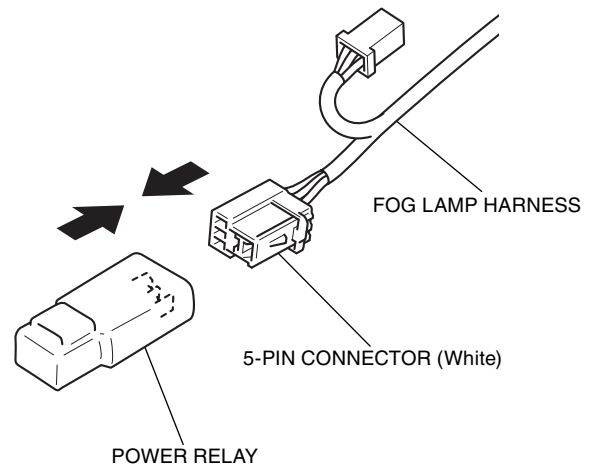
28. Pass the connector cover over the fog lamp switch harness as shown.



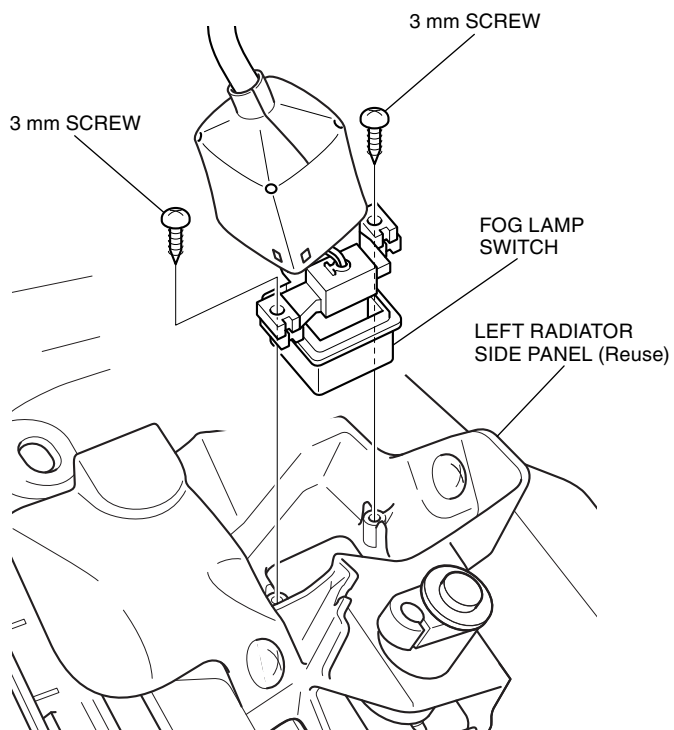
29. Connect the fog lamp switch harness as shown.



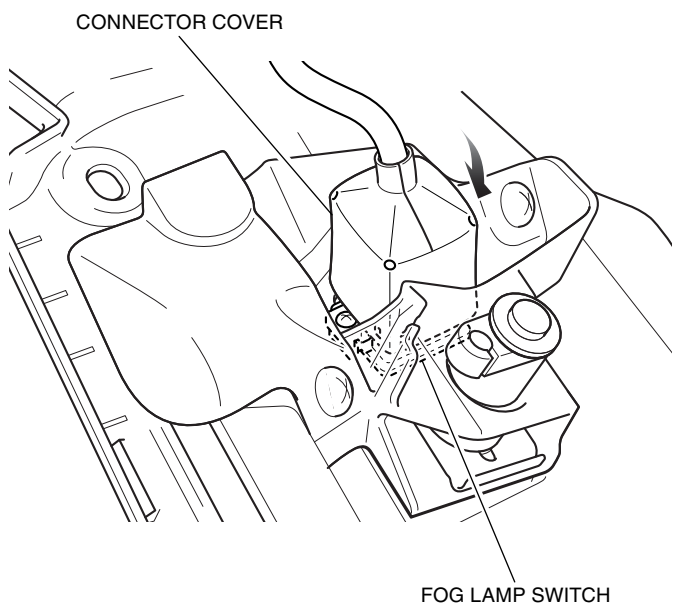
30. Connect the power relay as shown.



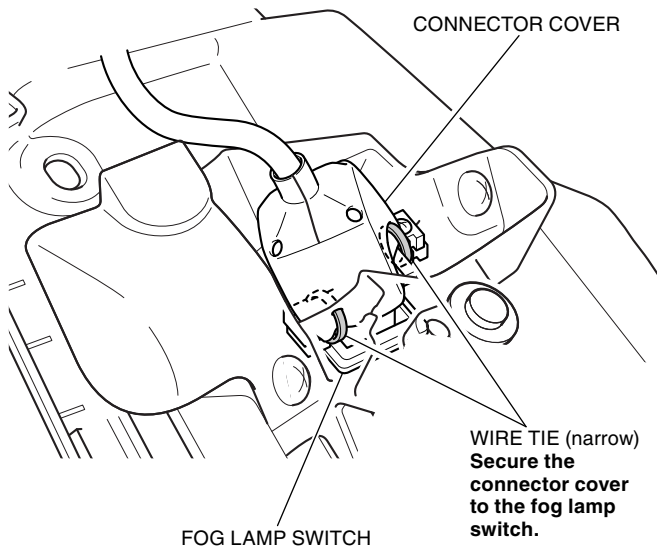
31. Install the fog lamp switch as shown.



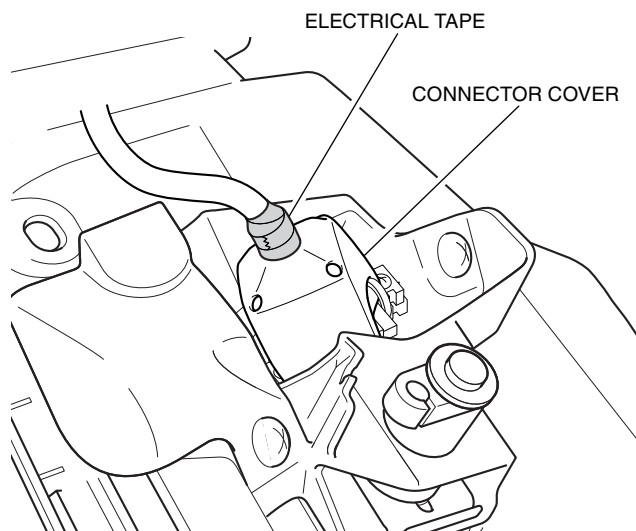
32. Fit the connector cover as shown.



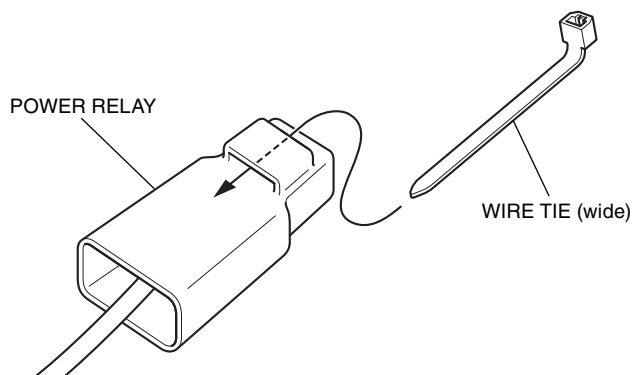
33. Secure the connector cover with the wire ties as shown.



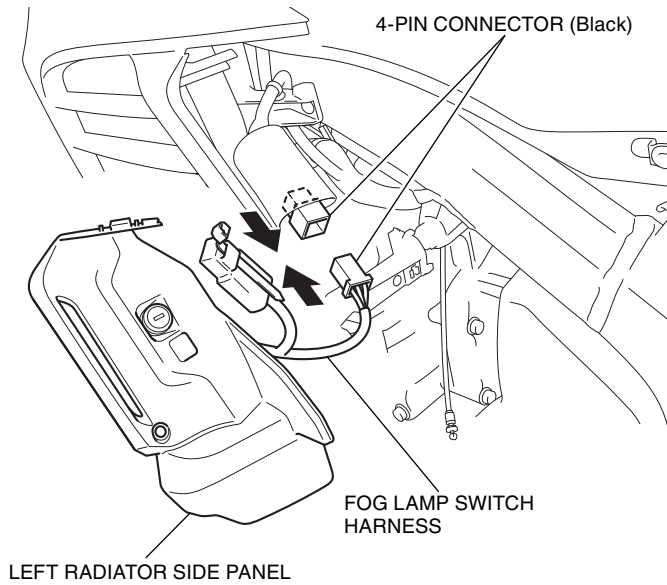
34. Wind the connector cover with electrical tape as shown.



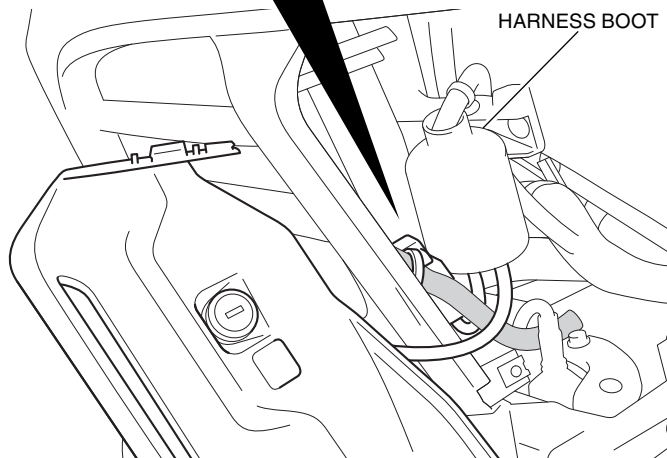
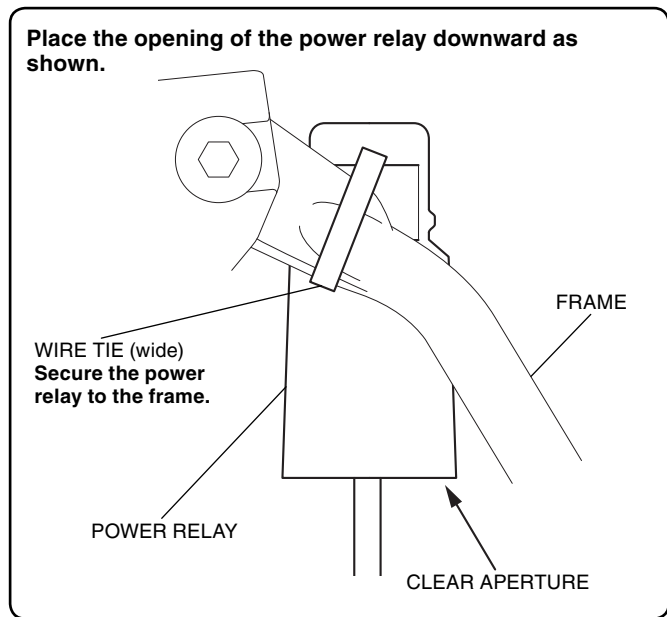
35. Pass the wire tie through the power relay.



36. Connect the fog lamp switch harness as shown.

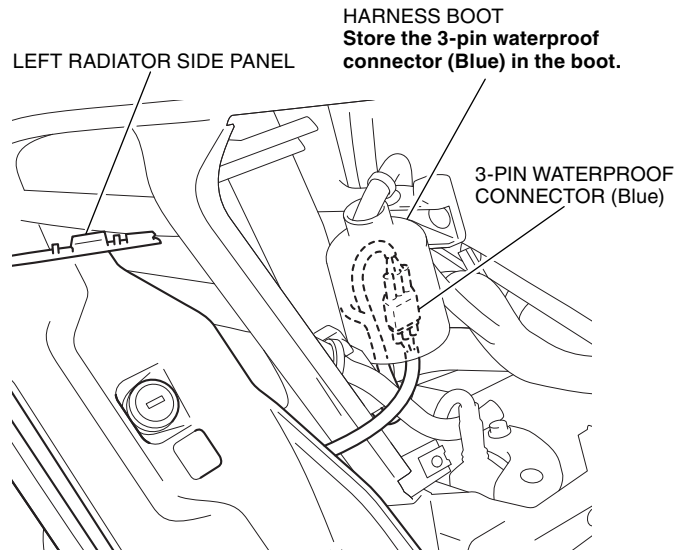


37. Secure the power relay as shown.



38. Install the left radiator side panel in the reverse order of removal.

- **When installing the left radiator side panel, secure the key cylinder so that it does not interfere with the harness boot. Check that the key operation works properly.**



39. Connect the negative (-) cable to the battery and check that each light functions.

40. Perform ADJUSTING AND AMING THE FOG LAMP.

41. Install the removed parts in the reverse order of removal.

- **Confirm that no wire harness is caught or too tight.**

ADJUSTING AND AIMING THE FOG LAMP

1. Place the motorcycle on a level surface, 5 m away from the aiming screen. Turn on the fog lamps.
2. Measure the mounting height of the fog lamp from the floor.
3. Aim the fog lamps so that the cut-off line of the light pattern on the aiming screen is the same distance above the floor as the fog lamp mounting height.

