



Service Bulletin

American Honda Motor Co., Inc.

2001-2003 GL1800/A ECM Replacement/Cooling System Product Improvement Campaign

American Honda's Motorcycle Division is conducting a Product Improvement Campaign to replace Engine Control Modules (ECMs) that may affect engine coolant temperature during certain riding conditions.

A small number of 2001-2003 GL1800/A customers may experience high engine coolant temperature readings. This condition may occur during prolonged low speed/low gear/high-ambient temperature conditions.

To decrease the possibility of high engine coolant temperature readings during these conditions, an ECM Replacement/Cooling System Product Improvement Campaign has been initiated.

AFFECTED UNITS

All 2001-2003 GL1800/A models.

Repair procedures are very specific. Please follow the INSPECTION, REPAIR, and IDENTIFICATION procedures in this bulletin closely.

CUSTOMER NOTIFICATION

American Honda is sending a letter to owners of all 2001-2003 model year GL1800/As, informing them that they are entitled to receive this inspection and repair at no cost. They will be instructed to call and make an appointment to have the inspection and update performed. For your reference, the text of the customer letter is reproduced on page 8 of this Service Bulletin.

INSPECTION

Before you begin the repair, check for a punch mark below the first letter of the engine number on the crankcase. (see IDENTIFICATION section on page 4 for more information).

- If there is a punch mark, the unit has been inspected and repaired and no further action is necessary.
- If there is no punch mark, follow the REPAIR procedures below.

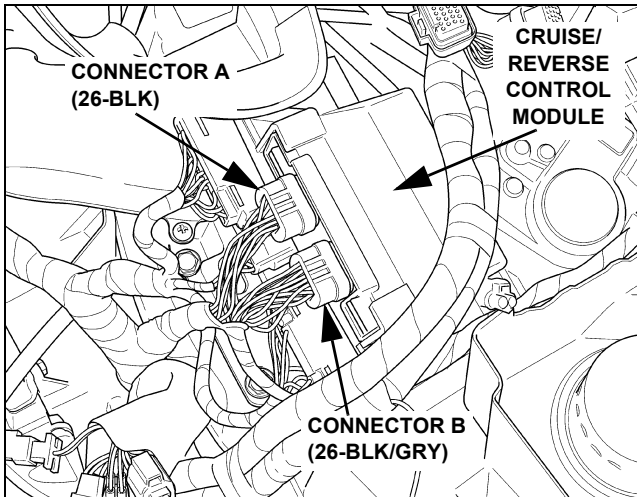
REPAIR PROCEDURES

This campaign consists of the following steps:

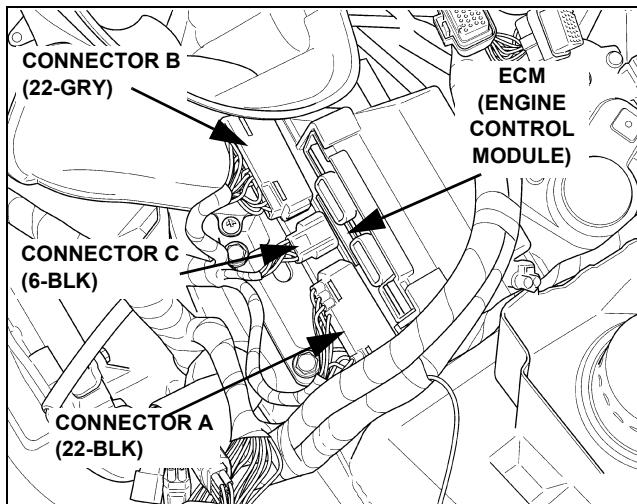
1. Replace ECM
2. Inspect Cylinder Head coolant capacity (some 2003 units excluded, see section for details).
3. Inspect Left Side Radiator
4. Inspect/install Coolant Gauge Sub-Harness
5. Pressure test cooling system
6. File two (2) warranty claims

ECM Replacement

1. Remove the top shelter (See Service Manual, page 2-10).
2. Remove connectors A and B from the cruise/reverse control module. Remove the cruise/reverse control module.



3. Disconnect connectors A, B, and C from the Engine control module. Remove the ECM.



4. Install the new ECM, then reinstall the cruise/reverse control module in the reverse order of removal.

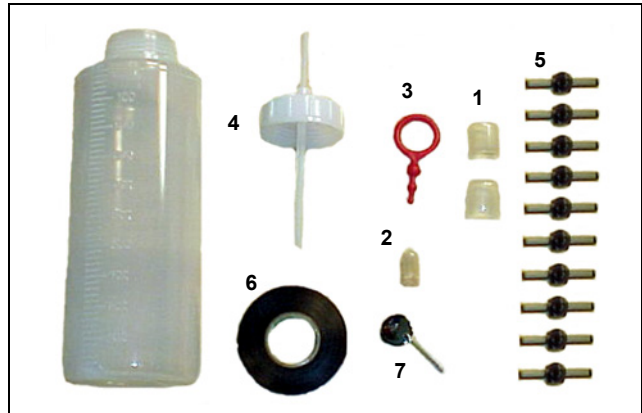
NOTE: When you start the vehicle – after completing ALL procedures – **the new ECM will require initialization.** To initialize the new ECM, perform the following procedure:

- Start the bike and allow it to warm up to normal operating temperature and remain at idle for **at least 90 seconds**. Do not operate the throttle during this time; if you do, the ECU will not initialize properly and the process will need to be repeated.

5. Proceed to the **Cylinder Head Inspection** section below.

Cylinder Head Inspection Kit

Use the Cylinder Head Inspection Kit for the **Cylinder Head Inspection** procedure. Use the kit for each GL1800/A you inspect. Do NOT dispose of kit items.



- 1) 19X20 mm cap (2) (cap B)
- 2) 8X15 mm cap (cap A)
- 3) Hose plug
- 4) Bottle/cap w/feed hose
- 5) Harness clips (10)
- 6) Harness tape
- 7) Inspection mirror

A limited number of additional Cylinder Head Inspection Kits are available: call **TechLine** at **800-421-1900, ext. 1** if you need one. Kit contents are NOT available separately as parts.

Cylinder Head Inspection

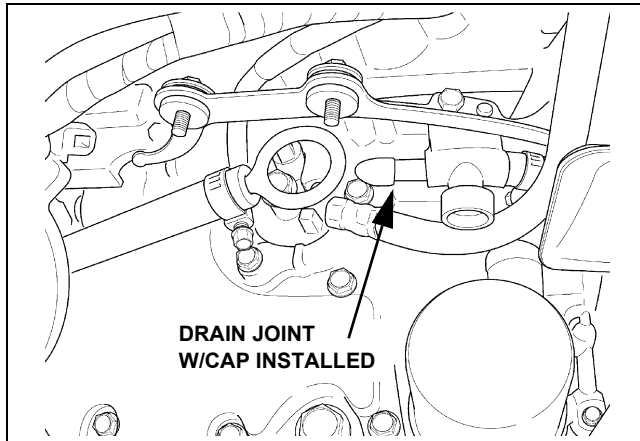
NOTE:

- The following late '03 models **do not** have to have their cylinder heads inspected:

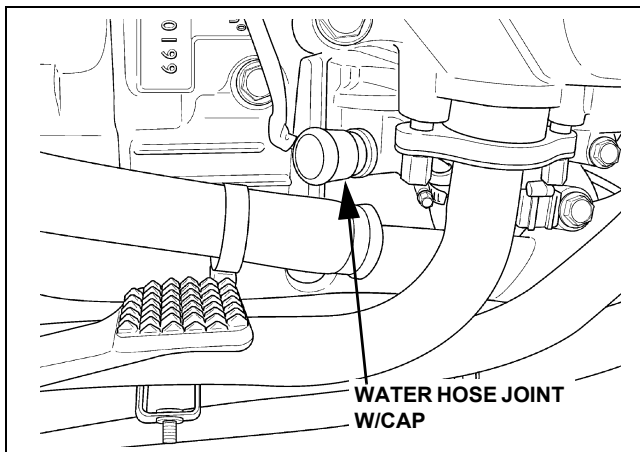
Late '03 (Non-ABS): after VIN 1HFSC470*3A204632
Late '03 (ABS): after VIN 1HFSC474*3A201020

- Perform the following procedure with the engine at room temperature.
 - Both Left and Right cylinder heads must be inspected.
 - Use the Cylinder Head Inspection Kit for the following procedure.
1. Remove the front lower fairing. (See S/M, 2-6)
 2. Remove and suspend the rear brake reservoir, being careful not to stress the brake hose. (See S/M, 15-A-8)

3. Remove and suspend the evaporative canister. (See S/M, 5-72) It is not necessary to disconnect the hoses.
4. Remove the right cylinder coolant hose from the drain joint. Allow the coolant to drain completely and discard it in an appropriate manner. Use caution to avoid being burned by hot coolant. Plug the hose and cap the joint.



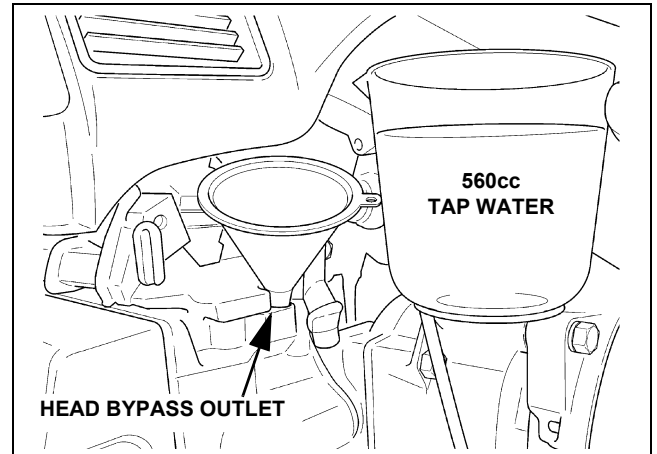
5. Remove the front exhaust pipe protectors. (See S/M, 2-17)
6. Remove the joint pipe from the head bypass outlet at the rear of each cylinder head. (See S/M, 8-12)
7. Remove the rear coolant hose from each water hose joint, then cap the joint.



8. Fill the inspection kit measuring bottle with 560cc of tap water.
NOTE: to ensure accurate filling, do not allow the feed hose to protrude down into the bottle from the cap.

9. Insert the feed hose (or a funnel) approximately 5mm into the head bypass outlet and carefully pour in the water:

- If less than 560cc of water can be added before it overflows, you MUST replace the cylinder head. Refer to the **Cylinder Head Set Replacement** section below.
- If 560cc of water can be added without overflowing, the cylinder head is OK.



10. Repeat the Cylinder Head Inspection procedure for the other cylinder head.
11. Drain the tap water from the cooling system.
12. Proceed to the **Left Side Radiator Outlet Inspection** section below.

Cylinder Head Set Replacement

NOTE: Use **only** the indicated L or R cylinder head sets and gasket sets listed in this Service Bulletin. Do NOT order individual parts.

1. If cylinder head set replacement is necessary, refer to the **Service Manual, Section 8: Cylinder Head/Valve** for procedures.
2. After replacing the cylinder head(s), proceed to the **Left Side Radiator Outlet Inspection** section below.

Left Side Radiator Outlet Inspection

1. Remove two trim clips, carefully push out the left side front fairing and lift up the air duct. (See S/M, 6-10)
2. Loosen the hose band on the left radiator outlet and remove the water hose. (See S/M, 1-37, 6-11)

- Using the inspection mirror from the Cylinder Head Inspection Kit, visually check for foreign matter clogging the radiator outlet:
 - If there is any foreign matter clogging the radiator outlet**, you MUST replace the left side radiator. Refer to the **Left Side Radiator Replacement** section below.
 - If there is no foreign matter clogging the radiator outlet**, the left side radiator is OK.
- You MUST also check the main wiring harness for damage. Proceed to the **Main Wiring Harness Inspection** section below.

Left Side Radiator Replacement

- If left side radiator replacement is necessary, refer to the **Service Manual, Section 6-8: Radiator/Cooling Fan** for procedures.
- After replacing the left side radiator, proceed to the **Main Wiring Harness Inspection** section below.

Main Wiring Harness Inspection

- Inspect the wiring harness in the left side radiator area for damage. Look for any chafing or wires that are being pinched.
- Wrap any affected areas with electrical tape.
- Proceed to the **Coolant Gauge Sub-Harness Inspection** section below.

Coolant Gauge Sub-Harness Inspection

- Using the **ECM & Sub-Harness Installation/Template Claim Filing Guide** on page 6 of this Service Bulletin, determine what Coolant Gauge Sub-Harness, if any, should be installed on the vehicle.

NOTE: For all models – If any Coolant Gauge Sub-Harness was previously installed, remove it now.

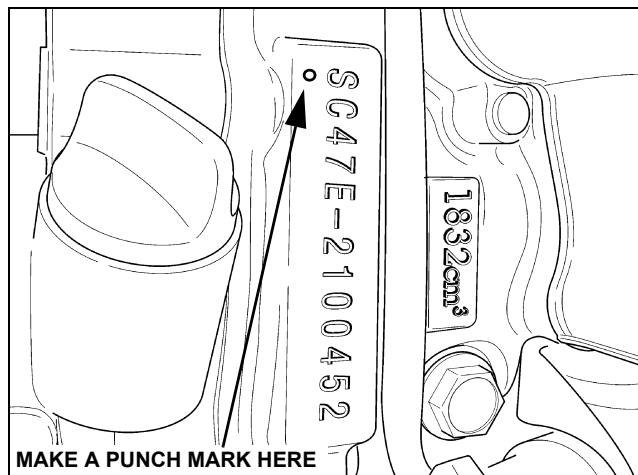
- Refer to **GL1800 #1, 2001 GL1800 Coolant Temperature Gauge Improvement** for Sub-harness replacement procedure.
- After verifying any sub-harness replacement, **install new ProHonda HP Coolant** and proceed to the **Cooling System Pressure Test** section below.

Cooling System Pressure Test

- Perform a cooling system pressure test on the vehicle. Refer to the **Service Manual, Section 6-6: Radiator Cap/System Pressure Inspection** for procedures.
- After verifying correct cooling system relief pressure, **reinstall the top shelter** and proceed to the **IDENTIFICATION** section below.
- Reinstall any additional parts removed during the Inspection/Repair Procedures.

IDENTIFICATION

Make a punch mark below the first letter of the engine number on the crankcase. This will indicate that the Product Improvement has been performed on this unit.



PARTS INFORMATION

Do not order ECMs or Sub-harnesses at this time. Initial parts will be automatically allocated by American Honda based on the number of units invoiced to your dealership. You will be notified when these parts are available for open ordering.

Order any other parts listed below as needed, based on inspection.

Engine control module (ECM):

P/N: **38770-MCA-305**

H/C: **7534654**

HP Coolant (Pre-mix) 1Qt:

P/N: **08C50-C321S01**

H/C: **3922614**

Radiator, L:

P/N: **19060-MCA-003**

H/C: **6538326**

Gasket Set, Cylinder Head Inspection:

P/N: **12013-MCA-305**

H/C: **7530728**

Right Cylinder:

Head Set, R:

P/N: **12010-MCA-305**

H/C: **7450208**

Gasket Set, R:

P/N: **12012-MCA-305**

H/C: **7530710**

Left Cylinder:

Head Set, L:

P/N: **12020-MCA-305**

H/C: **7450216**

Gasket Set, L:

P/N: **12022-MCA-305**

H/C: **7530736**

Sub-harnesses:

Sub-harness A (White):

P/N: **32112-MCA-305**

H/C: **7498546**

Sub-harness B (Blue):

P/N: **32112-MCA-306**

H/C: **7498553**

Sub-harness D (Green):

P/N: **32112-MCA-307**

H/C: **7498561**

Sub-harness E (Brown):

P/N: **32112-MCA-309**

H/C: **7498579**

WARRANTY INFORMATION

This Product Improvement Campaign will end on **June 19, 2006**.

This campaign features two (2) **Template Claim Filing Guides**:

- 1) **ECM & Sub-Harness Installation**
- 2) **Cooling System Inspection**

- Choose the Template numbers below that best describe the repair/inspection you performed.
- **Submit two (2) claims per VIN** (one for each Template Claim Filing Guide).

ECM & Sub-Harness Installation/Template Claim Filing Guide

Model Year/VIN	Left Head – NO GOOD (Replaced Head)	Left Head – OK
2001 Early (Non-ABS) – thru VIN 1HFSC470*1A001672	Order and install sub-harness A 32112-MCA-305 (White).	Order and install sub-harness B 32112-MCA-306 (Blue).
	Template: L93A FRT: 1.2	Template: L93B FRT: 1.2
2001 Late (Non-ABS) – after VIN 1HFSC470*1A001672	No sub-harness should be installed.	Order and install sub-harness D 32112-MCA-307 (Green).
	Template: L93C FRT: 1.0	Template L93D FRT: 1.2
2001 ABS Model	No sub-harness should be installed.	Order and install sub-harness D 32112-MCA-307 (Green).
	Template: L93C FRT: 1.0	Template: L93D FRT: 1.2
2002 All	Order and install sub-harness E 32112-MCA-309 (Brown).	
	Template: L93E FRT: 1.2	
2003 All	No sub-harness should be installed.	
	Template: L93F FRT: 1.0	

WARRANTY INFORMATION (Cont.)

Cooling System Inspection/Template Claim Filing Guide

NOTE: "X" indicates parts that you replaced.

All 2001 and 2002 Models

L Head	Inspection only	X				X		
R Head			X				X	
Both Heads				X				X
Radiator					X	X	X	X
Template: FRT:	L92A 1.7	L92B 5.1	L92C 5.1	L92D 10.6	L92E 1.7	L92F 5.1	L92G 5.1	L92H 10.6

Early 2003 Models

Non-ABS: thru VIN 1HFSC470*3A204632

ABS: thru VIN 1HFSC474*3A201020

L Head	Inspection only	X				X		
R Head			X				X	
Both Heads				X				X
Radiator					X	X	X	X
Template: FRT:	L92J 1.7	L92K 5.1	L92L 5.1	L92M 10.6	L92N 1.7	L92P 5.1	L92Q 5.1	L92R 10.6

Late 2003 Models

Non-ABS: after VIN 1HFSC470*3A204632

ABS: after VIN 1HFSC474*3A201020

Radiator	Inspection only	X
Template: FRT:	L92T 1.7	L92U 1.7

TEXT OF CUSTOMER LETTER

June 2003

Dear 2001-2003 GL1800/A Owner:

RE: Product Improvement Campaign

American Honda's Motorcycle Division is conducting a Product Improvement Campaign to replace 2001-2003 GL1800/A Engine Control Modules (ECMs) that may cause high engine coolant temperature during prolonged low speed/low gear/high-ambient temperature operation, such as parade riding.

If you want to have this campaign applied to your Gold Wing, please contact your nearest authorized Honda motorcycle dealer and make an appointment to have the ECM replaced and your GL1800/A's cooling system inspected. The dealer will replace any necessary parts at no cost to you. Please plan to leave your motorcycle at the dealer for *at least* one day to allow for dealer scheduling.

This Product Improvement Campaign ends June 19, 2006. After this date your motorcycle will no longer be eligible to have this campaign performed free of charge.

As this campaign also applies to subsequent owners, please keep this letter with the Owner's Manual. If you have moved or no longer own your 2001-2003 GL1800/A, please take a moment to complete and mail the enclosed *Information Change Card* so we can update our records.

You may visit our website at www.hondamotorcycles.com and click on "locate a dealer" to find a dealer who can assist you. Should you need assistance locating a dealer or have questions about this campaign, please call Motorcycle Customer Support at (866) 784-1870.

We apologize for any inconvenience this may cause you.

Thank you for your GL1800/A purchase.

Sincerely,

**American Honda Motor Co., Inc.
Motorcycle Division**